

# PRODUCT CATALOG 2023/24







## ESS EYE PRO IS BATTLEFIELD PROVEN.

ESS creates advanced eye protection systems that are designed to take on the most hostile and unforgiving environments on the planet. Our products feature cutting-edge technologies and patented innovations to ensure peak performance and uncompromising eye safety.





BUILT FOR BATTLE.™  
TOUGH FOR LIFE.™





# PRODUCT CATEGORIES

ESS IS BUILT FOR BATTLE.™ TOUGH FOR LIFE.™

6-7	INTRODUCTION
8	IMPACT SPECIFICATIONS
9	ANSI & MIL SPEC STANDARDS
10	ESS OPTICAL CLARITY
12	ESS LENS TINTS

## SUNGLASSES

16-21	ROLLBAR™ SUNGLASSES
22-27	CROWBAR™ SUNGLASSES
28-31	CDI™ SUNGLASSES
32-35	CDI MAX™ SUNGLASSES
36-39	5B™ SUNGLASSES
40-43	CREDENCE™ SUNGLASSES

## EYESHIELDS

46-51	CROSSBLADE™ EYESHIELDS
52-55	CROSSBLADE™ NARO EYESHIELDS
56-61	CROSSBOW® EYESHIELDS
62-65	SUPPRESSOR™ EYESHIELDS
66-69	CROSSHAIR™ EYESHIELDS
70-73	ICE™ & ICE NARO™ EYESHIELDS

## LASER PROTECTION

76-79	LPL-5 VISBLE
80-81	LPL-3B VISBLE / NEAR INFRARED
82-83	LPL-B NEAR INFRARED

## MILITARY GOGGLES

86-89	INFLUX™ GOGGLES
90-93	PROFILE NVG™ GOGGLES
94-97	JUMPMASTER™ GOGGLES
98-101	STRIKER™ GOGGLES

## FIRE GOGGLES

104-107	STRUCTURAL FIRE GOGGLES
108-113	WILDLAND FIRE GOGGLES

## RX PRESCRIPTION

114-115	RX SOLUTIONS
---------	--------------

## APEL & US NSN'S

116-117	ESS APEL PRODUCTS
---------	-------------------

## NATO / CONTRACT

118-119	U.S. & INTL. NATO NSN'S
---------	-------------------------









## WHO WE ARE

Experience unmatched quality and expertise with ESS, the industry leader in Ballistic Eye Protection for over 25 years. Trusted by all branches of the U.S. Department of Defense as their #1 issued eyewear, ESS has a proven track record of excellence. Founded in 1998 and proudly headquartered in Hailey, Idaho, USA, ESS has its roots as a fire safety goggle company and has since evolved to pioneer innovative product designs and cutting-edge technology for military eye protection. As a wholly-owned subsidiary of Oakley, ESS eyewear is proudly manufactured at the Oakley Headquarters in Foothill Ranch, California, ensuring top-notch craftsmanship and unwavering commitment to the safety and performance of those who serve. Elevate your eye protection with ESS and experience the difference trusted by the best.





## WHAT WE DO

- B BALLISTIC:** All ESS eye pro meets the baseline ANSI Z87+ standard. Most meet U.S. MIL Spec MIL-PRF-32432A, 7x the kinetic energy of ANSI.
- U UTILITY:** On-Duty, Off-Duty, Range Training, Hunting & Recreation
- I INTERCHANGEABILITY:** All eyeshields and most sunglass models feature interchangeable lenses to adapt to various light conditions
- L LENS TECHNOLOGY:** Optical Clarity, Anti-Fog Coating, Hi-Def Contrast, Polarized, UVA/UVB Protection, Photochromic, Laser Protection
- T TOUGH FOR LIFE:** 5-Year Warranty and Lens Contingency Program



## WHY WE DO IT

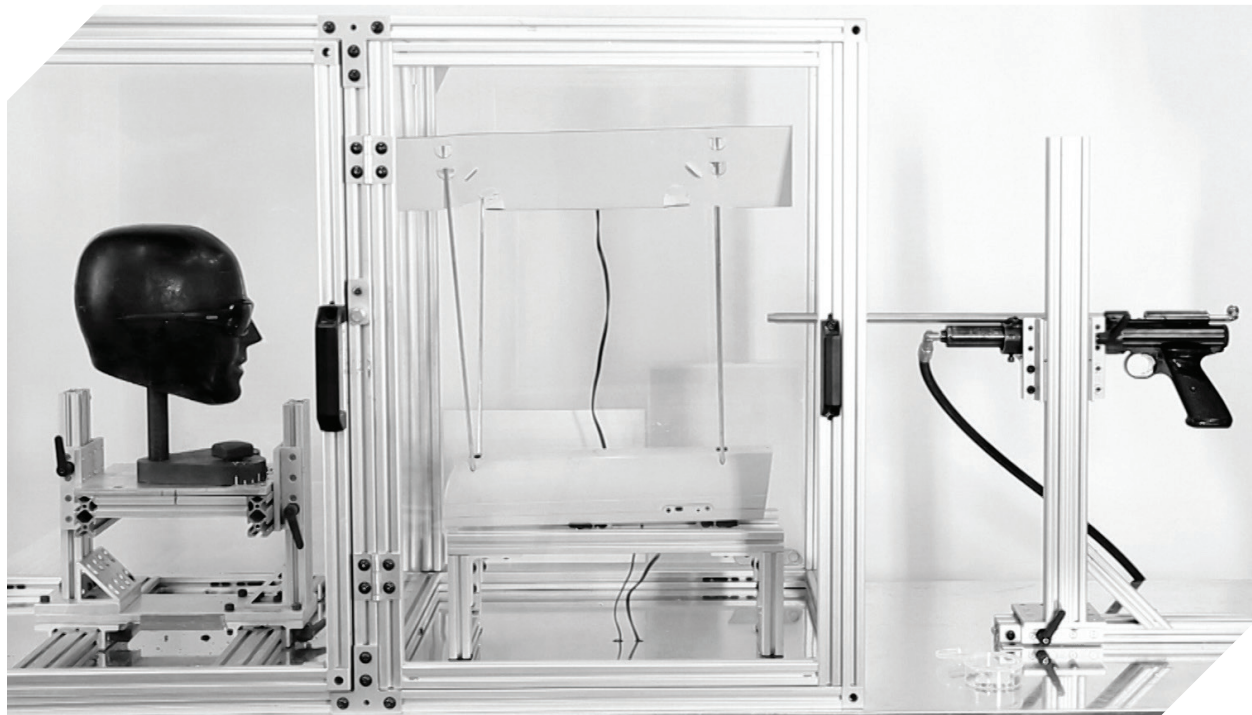
At the heart of our mission lies a commitment to safeguarding the guardians of our communities — from the brave men and women in the military, unwavering law enforcement officers, to fearless firefighters who stand ready to protect. We take on the crucial responsibility of preserving the vision of those who selflessly shield us. With a track record of delivering over 20 million units of the perfect blend of form fit, and function, ensuring exceptional optical clarity, a range of size options, and the convenience of interchangeable lenses. Our purpose is to keep our protectors seeing clearly, Eye Armor for those who need it most, so they can continue to protect us with precision and confidence.

**BUILT FOR BATTLE.™ TOUGH FOR LIFE.™**



# IMPACT SPECIFICATIONS

## MIL-SPEC & ANSI STANDARDS



### HIGH VELOCITY IMPACT

ESS protective eyewear surpasses the test for high-velocity impact protection as defined by the American National Standards Institute (ANSI). Per ANSI Z87.1, a quarter-inch steel ball is shot from three different heights, and at seven different angles. To pass the high-velocity test, no contact between the lens and eye is permitted during impact. In addition, no frame parts or lens fragments may be ejected during impact.

### HIGH MASS IMPACT

ESS protective eyewear also surpasses the protection requirements for high-mass impact. Within ANSI Z87.1, the high-mass impact test requires that the lens be hit by a 500-gram metal spike (over a pound of weight) dropped from a height of 51.2 inches (over four feet). To pass the test, no frame parts or lens fragments may be ejected during impact.

**WHAT HAPPENS TO ANSI-RATED EYE PRO WHEN IT IS TESTED TO THE MIL-SPEC STANDARD?  
SEE THE VIDEO AT THE ESS YOUTUBE CHANNEL: [www.youtube.com/esseyepro](http://www.youtube.com/esseyepro)**





## ANSI Z87.1 HIGH VELOCITY IMPACT TESTING

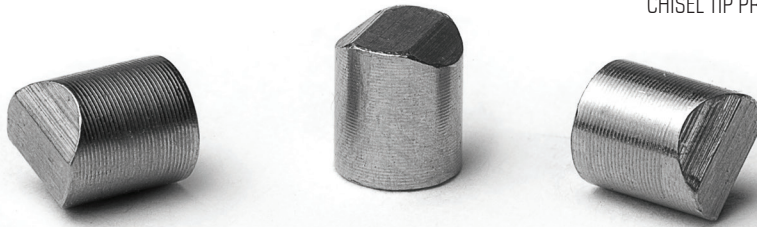


**SPECTACLE - MINIMUM VELOCITY**  
**.25 in diameter steel ball 150 Ft/sec**

**GOGGLE - MINIMUM VELOCITY**  
**.25 in diameter steel ball 250 Ft/sec**

## U.S. MIL SPEC MIL-PRF-32432A STANDARDS

CHISEL TIP PROJECTILES USED IN MIL SPEC TESTING.



**SPECTACLES STANDARD**  
**.15 caliber (at 700-725 ft/sec)**

**GOGGLES STANDARD**  
**.22 caliber (at 580-590 ft/sec)**

## U.S. MIL SPEC MIL-PRF-32432A

ESS protective eyewear surpasses the safety and ballistic testing standards found in MIL-PRF-32432A.

The U.S. military standard requires that ballistic eyewear must be able to withstand up to:

**.15 caliber at 700-725 ft/sec for spectacles**

**.22 caliber at 580-590 ft/sec for goggles.**

**THE US MILITARY STANDARD IS OVER 6 TIMES THE KINETIC ENERGY LEVEL OF ANSI Z87.1 TESTING STANDARD. ESS EYE PRO EXCEEDS U.S. MILITARY STANDARDS.**



ESS Crossbow  
U.S. MIL SPEC Rated  
722 Feet Per Second





# ESS OPTICAL CLARITY

## ESS SURPASSES ANSI STANDARDS FOR OPTICS

---



(U.S. Marine Corps photo by Lance Cpl. Dalton S. Swanbeck) The U.S. Dept. of Defense does not endorse any company, sponsor or their products or services.

### LENSES THAT ARE BUILT TO PERFORM

At ESS, we take pride in crafting lenses using high-quality polycarbonate meticulously engineered to deliver unparalleled optical clarity. Polycarbonate, a shatter-proof lightweight thermoplastic, undergoes a manufacturing process that involves heat, high-pressure injection molding, and compacting the material into a lens form. This material is incredibly strong and versatile and has inherent UVA/UVB protection.

While our lenses prioritize ballistic protection, they also adhere to the most stringent ANSI standards for optical clarity, prismatic power, and refractive power. We are committed to crafting lenses that not only meet and exceed results in a lab but also your expectations in the real world. We test and re-test to guarantee that our lenses provide a superior visual experience while meeting the highest industry benchmarks.

**ESS is Built for Battle. Tough for Life.**

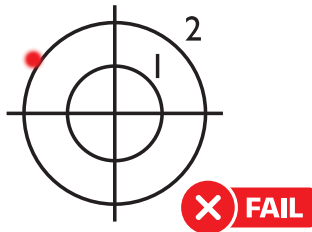


# PRISMATIC POWER

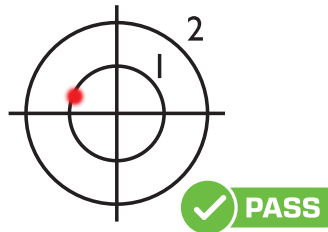
## ANSI Z87.1 OPTICS TEST #9.5

Prismatic Power is the measurement of how much light bends through a lens. The effect of excessive prism is that objects viewed through a lens aren't actually where they appear to be. The test also measures the prism imbalance in the left and right sides of the lens, which causes the eyes to fatigue as they work to overcome the artificial "double vision" induced by an unbalanced lens.

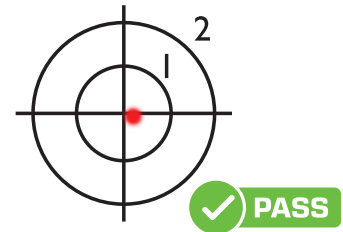
### NON-COMPLIANT OPTICS



### ANSI Z87.1 STANDARD



### ESS STANDARD



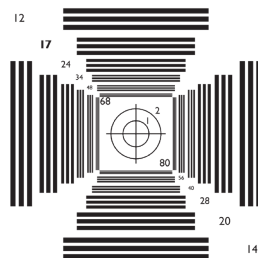
A laser fixture is set up 30 feet from the NBS target and is fired through each lens at the target. The better the optics, the less bending of the laser beam is observed; a lens without induced prism will allow the laser's path to continue directly at the center of the NBS target. Bear in mind when viewing the amount of prism that the effects of the distortion are more significant at distances greater than 30 feet.

# REFRACTIVE POWER

## ANSI Z87.1 OPTICS TEST #9.4

Lens refraction is a measure of what many people refer to as distortion or blurriness. The ANSI Z87.1 Refractive Power test requirements allow for a moderate amount of refraction in a safety lens. The lines in the NBS Definition Pattern are used to measure this lens characteristic.

### NBS DEFINITION PATTERN



### NON-COMPLIANT OPTICS



ESS lenses are held to a higher level of performance than the ANSI Z87.1 minimum refractive power standard, which is why objects look clearer through ESS lenses.

### ANSI Z87.1 STANDARD



### ESS STANDARD





# ESS LENS TINTS

## ESS LENS TECHNOLOGY - OPTIMAL VLT & LASER PROTECTION

### (VLT) - VISIBLE LIGHT TRANSMITTANCE

Visible Light Transmittance (VLT) represents the percentage of light that passes through a lens. For example, a lens with a VLT of 23 admits 23% of visible (non-UV) light, filtering out the remaining 77%. The lower the VLT, the darker the lens. Regardless of VLT, all ESS lenses provide 100% UVA/UVB protection. Changing Lens Tints allows the user to highlight different color wavelengths in the visual spectrum. In the image below, the ESS Hi-Def Bronze Lens cuts down on glare while enhancing the contrasting light conditions of the forest environment.



### BALLISTIC LASER EYE PROTECTION

In response to the increase in civil disturbances and usage of laser pointers, ESS has developed several products that feature Laser Protective Lenses. **ESS LPL-5** Lenses blocks 99.7% of visible green lasers at **532nm wavelengths** at an **Optical Density 2.5 (OD)** with a **48% VLT**. To learn more about ESS Laser Protective Lenses visit the LPL section of this catalog.



#### CROSSBOW LPL-5 ONE

Crossbow Eyeshield with single LPL-5 Lens

Model #: EE9007-19 (Universal Fit)



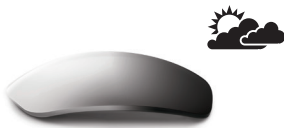


# LENS VLT CHART



**CLEAR**  
VLT: 90

*For use indoors or at night. Has no influence on contrast or color.*



**PHOTOCHROMIC**  
VLT: 86-24

*Lens with Light Adapting Technology for all light conditions - Lens goes from dark gray to clear*



**HI-DEF YELLOW**  
VLT: 85

*For flat to very low light. A high-contrast lens that helps bring out definition.*



**HI-DEF BRONZE**  
VLT: 62

*For flat to low light. Filters blue light to boost contrast & enhance depth perception in overcast or shaded conditions.*



**HI-DEF COPPER**  
VLT: 32

*For flat to medium light. Improves contrast & depth perception of blues & greens.*



**MIRRORED COPPER**  
VLT: 23

*For flat to bright light. Improves contrast & depth perception of blues & greens, while reflecting glare.*



**SMOKE GRAY**  
VLT: 15

*For medium to bright light. An all-purpose daytime lens with unbiased influence on color*



**POLARIZED GRAY**  
VLT: 15

*For extremely bright light & reflective surfaces. Is the most effective at cutting glare, has unbiased influence on color.*



**MIRRORED SILVER**  
VLT: 14

*For medium to extremely bright light. Similar to Mirrored Gray, but with a heavier mirrored finish.*



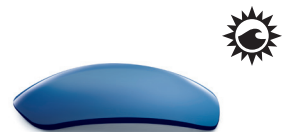
**MIRRORED BLUE**  
VLT: 13

*For medium to extremely bright light. Similar to Mirrored Silver, but with a reflective blue mirrored finish.*



**MIRRORED GRAY**  
VLT: 12

*For medium to extremely bright light. An all-purpose lens that reflects glare with unbiased influence on color.*



**POLARIZED MIRRORED BLUE**  
VLT: 11

*For extremely bright light & reflective surfaces. Polarized reflective blue mirrored finish.*



**POLARIZED MIRRORED GRAY**  
VLT: 9

*For intense, blinding sun & reflective surfaces. Is the most effective at cutting glare, has unbiased influence on color.*



**LPL-B**  
VLT: 57  
Wavelengths 820-1080nm @ OD 4.0+  
Wavelength 1064nm @ OD 5.0+  
*Lighter lens tint for day or night Ops. Multiband Laser Protective Lens Blocks Non-Visible InfraRed Lasers.*



**LPL-5**  
VLT: 48  
Wavelength 532nm @ OD 2.5  
*Versatile lens tint for day or night Ops specifically formulated to maximize protection against visible green lasers.*



**LPL-3B**  
VLT: 30  
Wavelength 532nm @ OD 4.0+  
Wavelengths 800-870nm @ OD 4.0+  
Wavelength 1064nm @ OD 6.0+  
*Darker lens tint blocks visible green lasers and Non-Visible InfraRed Lasers.*





POLARIZED

ESS



# ESS SUNGLASSES



- ROLLBAR
- CROWBAR
- CDI
- CDI MAX
- 5B
- CREDENCE



# ROLLBAR

[SHOP NOW >>](#)

## INTERCHANGEABLE LENS SUNGLASS

---



### PRODUCT DESCRIPTION

The Rollbar™ sunglass from ESS allows for rapid lens exchanges with the auto-locking Rollbar Lens Gate™. The sleek-yet-rugged design is built to excel in the most grueling environments. ESS military-grade polycarbonate lens material delivers crisp optics, plus a broad range of ballistic protection. A balanced fit and low-drag temple arms that won't interfere with hats, helmets, hearing pro or comms gear.

**Medium/Large Fit**







# ROLLBAR

## INTERCHANGEABLE LENS SUNGLASS

AUTHORIZED  
PROTECTIVE  
EYEWEAR  
LIST (APEL)



### BALLISTIC PROTECTION STANDARDS

U.S. MIL Spec MIL-PRF-32432A, ANSI Z871-2020, OSHA & CE  
Except Polarized Lenses which meet ANSI Z871-2020 (impact) & OSHA

### LENSES

2.2mm High-Impact Polycarbonate • Interchangeable • 100% UVA/UVB Protection  
ESS ToughZone™ Anti-Scratch Lens Coating • Distortion-Free ESSOPTICS™



#### RAPID LENS EXCHANGE

The Rollbar's Lens Gate allows lenses to be swapped out swiftly and securely.



#### RX - PRESCRIPTION LENSES

Add a prescription lens your Rollbar available for prescription range +5/-5





## ROLLBAR KITS & CONFIGURATIONS



### ROLLBAR SUBDUED LOGO

Black Frame with Black ESS Logo  
Clear & Smoke Gray Lenses  
Model #: EE9018-02



### ROLLBAR SILVER LOGO

Black Frame with Silver ESS Logo  
Clear & Smoke Gray Lenses  
Model #: EE9018-03



### ROLLBAR TACTICAL KIT

Black Frame with Black ESS Logo  
Clear, Smoke Gray, & Mirrored Copper Lenses  
Model #: EE9018-05



### ROLLBAR TERRAIN TAN

Terrain Tan Frame with Silver ESS Logo  
Clear & Smoke Gray Lenses  
Model #: EE9018-07



### ROLLBAR APEL UNIT ISSUE KIT

Black Frame with Black ESS Logo  
Clear & Smoke Gray Lenses  
Retail APEL Kit #: EE9018-06  
APEL Unit Issue Kit #: EE9018-01  
NSN #: 4240-01-630-8249



### ROLLBAR HI-VIS ORANGE

Hi-Vis Orange Frame with Silver ESS Logo  
Clear & Smoke Gray Lenses  
Model #: EE9018-17



## ROLLBAR KITS & CONFIGURATIONS



### ROLLBAR BLACK POLARIZED MIRRORRED GRAY

Black Frame with Silver ESS Logo  
1.8 mm Polarized Mirrored Gray Lenses  
Model #: EE9018-04



### ROLLBAR POLARIZED MIRRORRED BLUE

Black Frame with Satin Black ESS Logo  
1.8mm Polarized Mirrored Blue Lenses  
Model #: EE9018-10



### ROLLBAR MATTE BLACK POLARIZED MIRR. GRAY

Matte Black Frame with Black ESS Logo  
1.8 mm Polarized Mirrored Gray Lenses  
Model #: EE9018-13



### ROLLBAR STEALTH OLIVE

Stealth Olive Frame with Silver ESS Logo  
Hi Def Bronze & Smoke Gray lenses  
Model #: EE9018-16



### ROLLBAR REALTREE MAX-7

Realtree® MAX-7 Camo Frame with Silver ESS Logo  
Laser Etched Clear, Smoke Gray & Mirrored Copper lenses  
Model #: EE9018-18





## ROLLBAR KITS & CONFIGURATIONS



### ROLLBAR USA FLAG LOGO

Black frame with USA Flag logo  
1.8 mm Polarized Mirrored Gray Lenses  
Model #: EE9018-08



### ROLLBAR SUBDUED USA FLAG LOGO

Black frame with Tonal USA Flag logo  
1.8 mm Polarized Mirrored Gray Lenses  
Model #: EE9018-09

## ROLLBAR ACCESSORY LENSES



### CLEAR LENS

2.2mm high-impact Polycarbonate  
VLT 90%  
Model #: 740-0599



### HI-DEF YELLOW LENS

2.2mm high-impact Polycarbonate  
VLT 85%  
Model #: 740-0604



### HI-DEF BRONZE LENS

2.2mm high-impact Polycarbonate  
VLT 62%  
Model #: 101-286-003



### MIRRORED COPPER LENS

2.2mm high-impact Polycarbonate  
VLT 23%  
Model #: 740-0602



### SMOKE GRAY LENS

2.2mm high-impact Polycarbonate  
VLT 15%  
Model #: 740-0600



### MIRRORED GRAY LENS

2.2mm high-impact Polycarbonate  
VLT 12%  
Model #: 740-0601



### POLARIZED MIRR. BLUE LENS

1.8mm high-impact Polycarbonate  
VLT 11%  
Model #: 101-286-004



### POLARIZED MIRR. GRAY LENS

1.8mm high-impact Polycarbonate  
VLT 9%  
Model #: 740-0603



# CROWBAR

[SHOP NOW >>](#)

## INTERCHANGEABLE LENS SUNGLASS

---



### PRODUCT DESCRIPTION

Meet the lightweight and durable Crowbar™ interchangeable-lens sunglass from ESS. Featuring a frameless bottom lens design and innovative Lens Gate™ that makes lens exchanges quicker and field of view greater than ever. The military-grade polycarbonate lens material delivers crisp optics, plus a broad range of ballistic protection. A light and balanced fit that won't interfere with hats, helmets, hearing pro or comms gear.

**Medium/Small Fit**







# CROWBAR

## INTERCHANGEABLE LENS SUNGLASS



### BALLISTIC PROTECTION STANDARDS

U.S. MIL Spec MIL-PRF-32432A, ANSI Z871-2020, OSHA & CE  
Except Polarized Lenses which meet ANSI Z871-2020 (impact) & OSHA

### LENSES

2.2mm High-Impact Polycarbonate • Interchangeable • 100% UVA/UVB Protection  
ESS ToughZone™ Anti-Scratch Lens Coating • Distortion-Free ESSOPTICS™



### RAPID LENS EXCHANGE

The Crowbar's Lens Gate allows lenses to be swapped out swiftly and securely.



### Bottomless Frame

The ESS Crowbar sheds weight and allows a greater field of view by having frameless bottom lens design.





## CROWBAR KITS & CONFIGURATIONS



### CROWBAR SUBDUED LOGO

Black Frame with Black ESS Logo  
Clear & Smoke Gray Lenses  
Model #: EE9019-01



### CROWBAR SILVER LOGO

Black Frame with Silver ESS Logo  
Clear & Smoke Gray Lenses  
Model #: EE9019-02



### CROWBAR TACTICAL KIT

Black Frame with Black ESS Logo  
Clear, Smoke Gray, & Mirrored Copper Lenses  
Model #: EE9019-04



### CROWBAR TERRAIN TAN

Terrain Tan Frame with Silver ESS Logo  
Clear & Smoke Gray Lenses  
Model #: EE9019-05



### CROWBAR REALTREE MAX-7

Realtree® MAX-7 Camo Frame with Silver ESS Logo  
Laser Etched Clear, Smoke Gray & Mirrored Copper lenses  
Model #: EE9019-19



### CROWBAR HI-VIS ORANGE

Hi-Vis Orange with Silver ESS Logo  
Clear & Smoke Gray Lenses  
Model #: EE9019-18



## CROWBAR KITS & CONFIGURATIONS



### CROWBAR POLARIZED MIRRORRED GRAY KIT

Black Frame with Silver ESS Logo  
1.8 mm Polarized Mirrored Gray Lenses  
Model #: EE9019-03



### CROWBAR POLARIZED MIRRORRED BLUE KIT

Black Frame with Satin Black ESS Logo  
1.8 mm Polarized Mirrored Blue Lenses  
Model #: EE9019-11



### CROWBAR MATTE GRAY

Matte Dark Gray Frame with Silver ESS Logo  
1.8 mm Polarized Mirrored Blue Lenses  
Model #: EE9019-12



### CROWBAR MATTE NAVY

Matte Navy Frame with Silver ESS Logo  
Mirrored Gray Lenses  
Model #: EE9019-13



### CROWBAR STEALTH OLIVE

Matte Olive Frame with Silver ESS Logo  
Hi-Def Bronze and Smoke Gray Lenses  
Model #: EE9019-17



### CROWBAR MATTE OLIVE

Matte Olive Frame with Silver ESS Logo  
Smoke Gray Lenses  
Model #: EE9019-14



## CROWBAR KITS & CONFIGURATIONS



### CROWBAR USA FLAG LOGO

Black frame with USA Flag logo  
1.8 mm Polarized Mirrored Gray Lenses  
Model #: EE9019-06



### CROWBAR SUBDUED USA FLAG LOGO

Black frame with Tonal USA Flag logo  
1.8 mm Polarized Mirrored Gray Lenses  
Model #: EE9019-07

## CROWBAR ACCESSORY LENSES



### CLEAR LENS

2.2mm high-impact Polycarbonate  
VLT 90%  
Model #: 101-315-001



### HI-DEF YELLOW LENS

2.2mm high-impact Polycarbonate  
VLT 85%  
Model #: 101-315-004



### HI-DEF BRONZE LENS

2.2mm high-impact Polycarbonate  
VLT 62%  
Model #: 101-315-005



### MIRRORED COPPER LENS

2.2mm high-impact Polycarbonate  
VLT 23%  
Model #: 101-315-008



### SMOKE GRAY LENS

2.2mm high-impact Polycarbonate  
VLT 15%  
Model #: 101-315-002



### MIRRORED GRAY LENS

2.2mm high-impact Polycarbonate  
VLT 12%  
Model #: 101-315-007



### POLARIZED MIRR. BLUE LENS

1.8mm high-impact Polycarbonate  
VLT 11%  
Model #: 101-315-006



### POLARIZED MIRR. GRAY LENS

1.8mm high-impact Polycarbonate  
VLT 9%  
Model #: 101-315-003



# CDI

[SHOP NOW >>](#)

## INTERCHANGEABLE LENS SUNGLASS

---



### PRODUCT DESCRIPTION

The lightweight CDI™ sunglass features interchangeable lenses that can be easily swapped for quick adaptation to your environment. No-slip nose pads and temple arms help keep the CDI secure, even when wet. Custom Rx Inserts are also available.

**Medium/Small Fit**



# CDI

## INTERCHANGEABLE LENS SUNGLASS



### BALLISTIC PROTECTION STANDARDS

U.S. MIL SPEC MIL-PRF-31013 (clause 3.5.1.1), ANSI Z871-2020, OSHA & CE  
Except Polarized products which only meet ANSI Z871-2020 (Impact) & OSHA.

### LENSES

2.2mm High-Impact Polycarbonate • Interchangeable • 100% UVA/UVB Protection  
ESS ToughZone™ Anti-Scratch Lens Coating • Distortion-Free ESSOPTICS™



#### RAPID LENS EXCHANGE

CDI Sunglass lenses can be swapped out swiftly and securely.



#### CDI Rx INSERT

ESS CDI Sunglasses can be equipped with customizable interchangeable Rx lenses. CDI Rx Insert can accommodate a prescription range of +5.5/-6





## CDI KITS & CONFIGURATIONS



### CDI BLACK

Black Frame with Silver ESS Logo  
Clear & Smoke Gray Lenses  
Model #: 740-0296



### CDI TERRAIN TAN

Terrain Tan Frame with Silver ESS Logo  
Clear & Smoke Gray Lenses  
Model #: 740-0458



### CDI MATTE OLIVE

Matte Olive Frame with Silver ESS Logo  
Smoke Gray Lenses  
Model #: EE9002-04



### CDI MATTE NAVY

Matte Navy Frame with Silver ESS Logo  
Polarized Mirrored Gray Lenses  
Model #: EE9002-03



### CDI POLARIZED MIRRORED GRAY

Black Frame with Silver ESS Logo  
Polarized Mirrored Gray Lenses  
Model #: 740-0529



### CDI POLARIZED MIRRORED BLUE

Black Frame with Silver ESS Logo  
Polarized Mirrored Blue Lenses  
Model #: EE9002-02



## CDI KITS & CONFIGURATIONS



### CDI TACTICAL KIT

Black Frame with Silver ESS Logo  
 Clear, Smoke Gray, & Mirrored Copper Lenses  
**Model #:** E9002-01



### CDI REPLACEMENT FRAMES

Black Frame with Silver ESS Logo  
**Model #:** 740-0574  
 Terrain Tan Frame with Silver ESS Logo  
**Model #:** 740-0588

## CDI ACCESSORY LENSES



**CLEAR LENS**  
 2.2mm high-impact Polycarbonate  
 VLT 90%  
**Model #:** 740-0185



**HI-DEF YELLOW LENS**  
 2.2mm high-impact Polycarbonate  
 VLT 85%  
**Model #:** 740-0186



**HI-DEF BRONZE LENS**  
 2.2mm high-impact Polycarbonate  
 VLT 62%  
**Model #:** 101-598-001



**MIRRORED COPPER LENS**  
 2.2mm high-impact Polycarbonate  
 VLT 23%  
**Model #:** 740-0188



**SMOKE GRAY LENS**  
 2.2mm high-impact Polycarbonate  
 VLT 15%  
**Model #:** 740-0320



**MIRRORED SILVER LENS**  
 2.2mm high-impact Polycarbonate  
 VLT 14%  
**Model #:** 740-0187



**MIRRORED GRAY LENS**  
 2.2mm high-impact Polycarbonate  
 VLT 12%  
**Model #:** 740-0505



**POLARIZED MIRR. BLUE LENS**  
 1.8mm high-impact Polycarbonate  
 VLT 11%  
**Model #:** 101-598-002



**POLARIZED MIRR. GRAY LENS**  
 1.8mm high-impact Polycarbonate  
 VLT 9%  
**Model #:** 740-0319



# CDI MAX

[SHOP NOW >>](#)

## LARGE FIT INTERCHANGEABLE LENS SUNGLASS

---



### PRODUCT DESCRIPTION

The CDI MAX™ is a larger version of the popular CDI™, offering a wider field of view and broader coverage. As with the original CDI, the CDI MAX can adapt to any light environment by swapping lenses with the Lateral Exchange System™. CDI MAX's 2.4mm Polycarbonate lenses afford you maximum protection.

**Medium/Large Fit**







# CDI MAX

## LARGE FIT INTERCHANGEABLE LENS SUNGLASS



### BALLISTIC PROTECTION STANDARDS

U.S. MIL SPEC MIL-PRF-31013 (clause 3.5.1.1), ANSI Z871-2020, OSHA & CE

### LENSES

2.4mm High-Impact Polycarbonate • Interchangeable • 100% UVA/UVB Protection  
ESS ToughZone™ Anti-Scratch Lens Coating • Distortion-Free ESSOPTICS™



### RAPID LENS EXCHANGE

CDI Max Sunglass lenses can be swapped out swiftly and securely.



## CDI MAX KITS & CONFIGURATIONS



### CDI MAX BLACK

Black Frame with Silver ESS Logo  
Clear & Smoke Gray Lenses  
Model #: 740-0297



### CDI MAX TERRAIN TAN

Terrain Tan Frame with Silver ESS Logo  
Clear & Smoke Gray Lenses  
Model #: 740-0457



### CDI MAX MATTE DARK GRAY

Matte Dark Gray Frame with Silver ESS Logo  
Smoke Gray Lenses  
Model #: EE9003-02



### CDI MAX MATTE OLIVE

Matte Olive Frame with Silver ESS Logo  
Smoke Gray Lenses  
Model #: EE9003-03

## CDI MAX ACCESSORY LENSES



### CLEAR LENS

2.2mm high-impact Polycarbonate  
VLT 90%  
Model #: 740-0412



### HI-DEF YELLOW LENS

2.2mm high-impact Polycarbonate  
VLT 85%  
Model #: 740-0413



### HI-DEF BRONZE LENS

2.2mm high-impact Polycarbonate  
VLT 62%  
Model #: 101-623-001



### HI-DEF COPPER LENS

2.2mm high-impact Polycarbonate  
VLT 32%  
Model #: 740-0414



### SMOKE GRAY LENS

2.2mm high-impact Polycarbonate  
VLT 15%  
Model #: 740-0415



### MIRRORED SILVER LENS

2.2mm high-impact Polycarbonate  
VLT 14%  
Model #: 740-0416



# 5B

[SHOP NOW >>](#)

## FIXED LENS SUNGLASS

---



### PRODUCT DESCRIPTION

The ESS 5B is far more than just another sunglass. With ballistic lenses, distortion-free optics, and all-day comfort, the 5B is the true embodiment of functional, fashionable eye pro. The frame features low-profile temple arms for comfort with over-the-ear hearing protection, hats or helmets.

**Medium Fit**

# 5B

## FIXED LENS SUNGLASS



### BALLISTIC PROTECTION STANDARDS

U.S. MIL Spec MIL-PRF-32432, ANSI Z871-2020, OSHA & CE

Except Polarized Lenses which meet ANSI Z871-2020 (impact) & OSHA

### LENSES

2.2mm High-Impact Polycarbonate • Interchangeable • 100% UVA/UVB Protection  
ESS ToughZone™ Anti-Scratch Lens Coating • Distortion-Free ESSOPTICS™



#### RX-READY FRAME

The ESS 5B frame can accommodate custom Rx filled lenses with a prescription range of +5.5/-6



#### ESS Outdoor Collection

The ESS Outdoor Collection combines unique colors and patterns that not only provide ballistic protection, but look cool doing it.





## 5B KITS & CONFIGURATIONS



### 5B BLACK - SMOKE GRAY

Black Frame with Black ESS Logo

Smoke Gray Lenses

Model #: EE9006-06



### 5B BLACK - MIRRORED COPPER

Black Frame with Silver ESS Logo

Mirrored Copper Lenses

Model #: EE9006-02



### 5B GRAY - MIRRORED GRAY

Gray Frame

Mirrored Gray Lenses

Model #: EE9006-05



### 5B TERRAIN TAN - SMOKE GRAY

Terrain Tan Frame

Smoke Gray Lenses

Model #: EE9006-15



### 5B HI-VIS ORANGE - SMOKE GRAY

Hi-Vis Orange Frame

Smoke Gray Lenses

Model #: EE9006-22



## SB KITS & CONFIGURATIONS



### SB SPIN CAMO - HI-DEF BRONZE

Spin Camo Bone Frame  
Hi-Def Bronze Lenses  
Model #: EE9006-23



### SB STEALTH OLIVE - HI-DEF BRONZE

Stealth Olive Frame  
Hi-Def Bronze Lenses  
Model #: EE9006-21



### SB BLACK - POLARIZED MIRRORED GRAY

Black Frame  
Polarized Mirrored Gray Lenses  
Model #: EE9006-03



### SB MATTE DARK GRAY - POLARIZED MIRRORED BLUE

Matte Dark Grey Frame  
Polarized Mirrored Blue Lenses  
Model #: EE9006-18



### SB MATTE NAVY - POLARIZED MIRRORED GRAY

Matte Navy Frame  
Polarized Mirrored Gray Lenses  
Model #: EE9006-19



# CREDESCENCE

FIXED LENS SUNGLASS

---

[SHOP NOW >>](#)



## PRODUCT DESCRIPTION

With Credence, seeing is believing. This sunglass delivers a hefty dose of performance, protection and style. The broad lens wrap of the Credence provides a wide field of view through distortion-free, military-grade polycarbonate. The frame features low-profile temple arms for comfort with over-the-ear hearing protection, hats or helmets.

**Medium/Large Fit**





POLICE

ESS



# CREDENCE

## FIXED LENS SUNGLASS



### BALLISTIC PROTECTION STANDARDS

U.S. MIL Spec MIL-PRF-32432, ANSI Z871-2020, OSHA & CE

### LENSES

2.2mm High-Impact Polycarbonate • Interchangeable • 100% UVA/UVB Protection  
ESS ToughZone™ Anti-Scratch Lens Coating • Distortion-Free ESSOPTICS™



#### RX-READY FRAME

The ESS Credence frame can accommodate custom Rx filled lenses with a prescription range of +7/-7



#### CREDENCE BLACK SILVER LOGO - MIRRORED BLUE

Black Frame with Silver ESS Logo

Mirrored Blue Lenses

Model #: EE9015-08



## CREDENCE KITS & CONFIGURATIONS



### CREDENCE SUBDUED LOGO - SMOKE GRAY

Black Frame with Black ESS Logo

Smoke Gray Lenses

Model #: EE9015-01



### CREDENCE SILVER LOGO - SMOKE GRAY

Black Frame with Silver ESS Logo

Smoke Gray Lenses

Model #: EE9015-04



### CREDENCE BLACK - MIRRORED COPPER

Black Frame with Copper ESS Logo

Mirrored Copper Lenses

Model #: EE9015-06



### CREDENCE TERRAIN TAN - SMOKE GRAY

Terrain Tan Frame with Silver ESS Logo

Smoke Gray Lenses

Model #: EE9015-14



### CREDENCE GRAY - MIRRORED COPPER

Black Frame with Copper ESS Logo

Mirrored Copper Lenses

Model #: EE9015-02



### CREDENCE MATTE DARK GRAY - MIRRORED BLUE

Matte Dark Gray Frame with Silver ESS Logo

Mirrored Blue Lenses

Model #: EE9015-15







# ESS EYESHIELDS



- CROSSBLADE
- CROSSBLADE NARD
- CROSSBOW
- SUPPRESSOR
- CROSSHAIR
- ICE



# CROSSBLADE

[SHOP NOW >>](#)

ADVANCED APEL BALLISTIC EYESHIELD - STANDARD SIZE

---



## PRODUCT DESCRIPTION

The new ESS CrossBlade Eyeshield features advanced ClearZone™ Anti-fog coatings plus two different sized lens and nosepiece options to allow for customizable modular fit. With the modular fit system, the CrossBlade can be set specifically to fit the end user's facial structure. CrossBlade and CrossBlade NARO are fully U.S. Army UPLC compatible.

**Medium/Large Fit**

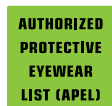






# CROSSBLADE

## ADVANCED APEL BALLISTIC EYESHIELD - STANDARD SIZE



### BALLISTIC PROTECTION STANDARDS

U.S. MIL Spec MIL-PRF-32432A, ANSI Z871-2020, OSHA & CE  
Except Polarized Lenses which meet ANSI Z871-2020 (impact) & OSHA

### LENSES

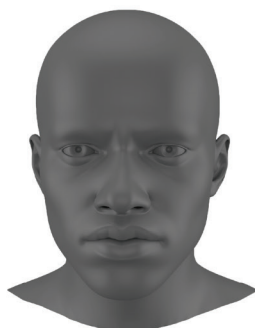
2.4mm High-Impact Polycarbonate • Interchangeable • 100% UVA/UVB Protection  
ESS ClearZone™ Anti-Fog/Anti-Scratch Lens Coating • Distortion-Free ESSOPTICS™

### CROSSBLADE MODULAR FIT SYSTEM



#### SMALL

NARO Lens  
NARO Nosepiece



#### MEDIUM

NARO Lens  
STD Nosepiece



#### TALL

STD Lens  
NARO Nosepiece



#### LARGE

STD Lens  
STD Nosepiece

The **ESS CrossBlade Eyeshield** is available in Two Sizes: **Standard and NARO**.

All CrossBlade Frames, Lenses and Nosepieces are interchangeable and create a unique **Modular Fit System**.

The user can mix and match different CrossBlade Standard and NARO components to create a fully customizable fit based on their own unique facial structure.

## CROSSBLADE STANDARD KITS & CONFIGURATIONS



### CROSSBLADE 2X KIT

Two Black Frames  
Clear & Smoke Gray Lenses  
Model #: EE9032-03



### CROSSBLADE TERRAIN TAN 2X KIT

Two Terrain Tan Frames  
Clear & Smoke Gray Lenses  
Model #: EE9032-05



### CROSSBLADE 2X+ KIT

Two Black Frames  
Clear, Smoke Gray & Hi-Def Copper Lenses  
Model #: EE9032-06



### CROSSBLADE 3LS KIT

One Black Frame  
Clear, Smoke Gray & Hi-Def Yellow Lenses  
Model #: EE9032-07



### CROSSBLADE APEL UNIT ISSUE KIT

Black Frame  
Clear & Smoke Gray Lenses  
APEL Retail Model #: EE9032-04  
APEL Unit Issue Kit #: EE9032-12  
NSN #: 4240-01-678-7124



### CROSSBLADE DELUXE KIT

Black Frame  
Standard Clear & Smoke Gray Lenses  
NARO Clear & Smoke Gray Lenses  
Deluxe Unit Issue Kit #: EE9032-10  
NSN #: 4240-01-678-6068



## CROSSBLADE STANDARD KITS & CONFIGURATIONS



### CROSSBLADE ONE SMOKE GRAY

Black Frame  
Smoke Gray Lens  
Model #: EE9032-08



### CROSSBLADE ONE CLEAR

Black Frame  
Clear Lens  
Model #: EE9032-09



### CROSSBLADE ONE POLARIZED

Black Frame  
Polarized Gray Lens  
Model #: EE9032-26



### CROSSBOW SPIN CAMO KIT

Spin Camo Bone frame  
Clear, Smoke Gray & Hi-Def Bronze Lenses  
Model #: EE9032-24



### CROSSBOW REALTREE MAX-7 KIT

Realtree® MAX-7 Camo Frame with Silver ESS Logo  
Laser Etched Clear, Smoke Gray & Hi-Def Copper lenses  
Model #: EE9032-25



## CROSSBLADE STANDARD KITS & CONFIGURATIONS



### CROSSBLADE REPLACEMENT BLACK FRAME

Black frame

Model #: 102-333-001

APEL Model#: 102-333-003

NSN #: 4240-01-679-3168



### CROSSBLADE REPLACEMENT FRAME TERRAIN TAN

Terrain Tan frame with Nosepiece

Model #: 102-333-002

## CROSSBOW STANDARD ACCESSORY LENSES & NOSEPIECES



### CLEAR LENS

2.4mm high-impact Polycarbonate  
VLT 90%

Model #: 102-189-004



### PHOTOCHROMIC LENS

2.4mm high-impact Polycarbonate  
VLT 86-24%

Model #: 102-189-009



### HI-DEF YELLOW LENS

2.4mm high-impact Polycarbonate  
VLT 85%

Model #: 102-189-006



### HI-DEF BRONZE LENS

2.4mm high-impact Polycarbonate  
VLT 62%

Model #: 102-189-008



### HI-DEF COPPER LENS

2.4mm high-impact Polycarbonate  
VLT 32%

Model #: 102-189-005



### STANDARD BLACK

Replacement Nosepiece  
Model #: 100-690-003



### STANDARD UPLC BLACK

Replacement Rx Nosepiece  
Model #: 100-690-004



### SMOKE GRAY LENS

2.4mm high-impact Polycarbonate  
VLT 15%

Model #: 102-189-003



### POLARIZED GRAY LENS

1.9mm high-impact Polycarbonate  
VLT 15%

Model #: 102-189-007



### LPL-5 LENS

2.4mm high-impact Polycarbonate  
VLT 48%

Model #: 102-189-015



### LPL-3B LENS

2.4mm high-impact Polycarbonate  
VLT 30%

Model #: 102-189-016



### LPL-B LENS

2.4mm high-impact Polycarbonate  
VLT 57%

Model #: 102-189-010



### STANDARD TERRAIN TAN

Replacement Nosepiece  
Model #: 102-191-002



### STANDARD U-RX BLACK

Replacement Rx Nosepiece  
Model #: 102-324-004



# CROSSBLADE NARO

[SHOP NOW >>](#)

ADVANCED APEL BALLISTIC EYESHIELD - NARO SIZE

---



## PRODUCT DESCRIPTION

The new ESS CrossBlade™ Eyeshield features advanced ClearZone™ Anti-fog coatings plus two different sized lens and nosepiece options to allow for customizable modular fit. With the modular fit system, the CrossBlade can be set specifically to fit the end user's facial structure. CrossBlade and CrossBlade NARO are fully U.S. Army UPLC compatible.

**Medium/Small Fit**

# CROSSBLADE NARO

## ADVANCED APEL BALLISTIC EYESHIELD - NARO SIZE

AUTHORIZED  
PROTECTIVE  
EYEWEAR  
LIST (APEL)



### BALLISTIC PROTECTION STANDARDS

U.S. MIL Spec MIL-PRF-32432A, ANSI Z871-2020, OSHA & CE  
Except Polarized Lenses which meet ANSI Z871-2020 (impact) & OSHA

### LENSES

2.4mm High-Impact Polycarbonate • Interchangeable • 100% UVA/UVB Protection  
ESS ClearZone™ Anti-Fog/Anti-Scratch Lens Coating • Distortion-Free ESSOPTICS™



### CROSSBLADE NARO

CrossBlade NARO Lenses are roughly 18% smaller than s  
CrossBlade Standard Lenses



### CROSSBOW REALTREE MAX-7 KIT

Realtree® MAX-7 Camo Frame with Silver ESS Logo  
Laser Etched Clear, Smoke Gray & Hi-Def Copper lenses  
Model #: EE9034-16





## CROSSBLADE NARD KITS & CONFIGURATIONS



### CROSSBLADE NARD 2X KIT

Two Black Frames  
Clear & Smoke Gray Lenses  
Model #: EE9034-03



### CROSSBLADE NARD 2LS KIT

Black Frame  
Clear & Smoke Gray Lenses  
Model #: EE9034-02

RealTree® MAX-7 Camo



### CROSSBLADE NARD ONE SMOKE GRAY

Black Frame  
Smoke Gray Lens  
Model #: EE9034-07



### CROSSBLADE NARD ONE CLEAR

Black Frame  
Clear Lens  
Model #: EE9034-08



### CROSSBLADE NARD APEL UNIT ISSUE KIT

Black Frame  
Clear & Smoke Gray Lenses  
APEL Unit Issue Kit #: EE9034-05  
NSN #: 4240-01-678-7130



### CROSSBLADE NARD ONE POLARIZED

Black Frame  
Polarized Gray Lens  
Model #: EE9034-17



## CROSSBOW NARO ACCESSORY LENSES & NOSEPIECES



### CLEAR LENS

2.4mm high-impact Polycarbonate  
VLT 90%

Model #: 102-190-003



### PHOTOCHROMIC LENS

2.4mm high-impact Polycarbonate  
VLT 86-24%

Model #: 102-190-009



### HI-DEF YELLOW LENS

2.4mm high-impact Polycarbonate  
VLT 85%

Model #: 102-190-005



### HI-DEF BRONZE LENS

2.4mm high-impact Polycarbonate  
VLT 62%

Model #: 102-190-007



### HI-DEF COPPER LENS

2.4mm high-impact Polycarbonate  
VLT 32%

Model #: 102-190-006



### NARO BLACK

Replacement Nosepiece  
Model #: 102-690-005



### NARO UPLC BLACK

Replacement Rx Nosepiece  
Model #: 102-690-006



### SMOKE GRAY LENS

2.4mm high-impact Polycarbonate  
VLT 15%

Model #: 102-190-004



### POLARIZED GRAY LENS

1.9mm high-impact Polycarbonate  
VLT 15%

Model #: 102-190-008



### LPL-5 LENS

2.4mm high-impact Polycarbonate  
VLT 48%

Model #: 102-190-015



### LPL-3B LENS

2.4mm high-impact Polycarbonate  
VLT 30%

Model #: 102-190-016



### LPL-B LENS

2.4mm high-impact Polycarbonate  
VLT 57%

Model #: 102-190-010



### NARO TERRAIN TAN

Replacement Nosepiece  
Model #: 102-324-006



### NARO U-RX BLACK

Replacement Rx Nosepiece  
Model #: 102-324-005



# CROSSBOW

[SHOP NOW >>](#)

## THE ANTI-FOG APEL BALLISTIC EYESHIELD

---



### PRODUCT DESCRIPTION

Militaries worldwide rely on the Crossbow® as their #1 choice for eye protection. Featuring a dedicated FlowCoat lens technology, ESS ClearZone™ is engineered to eliminate fog inside and prevent scratches outside. Crossbow is fully U.S. Army UPLC compatible.

### Universal Fit

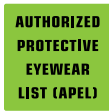
BUILT FOR BATTLE.™ TOUGH FOR LIFE.™





# CROSSBOW

## THE ANTI-FOG APEL BALLISTIC EYESHIELD



### BALLISTIC PROTECTION STANDARDS

U.S. MIL Spec MIL-PRF-32432A, ANSI Z871-2020, OSHA & CE  
Except Polarized Lenses which meet ANSI Z871-2020 (impact) & OSHA

### LENSES

2.4mm High-Impact Polycarbonate • Interchangeable • 100% UVA/UVB Protection  
ESS ClearZone™ Anti-Fog/Anti-Scratch Lens Coating • Distortion-Free ESSOPTICS™



### CROSSBOW GASKET

The Gasket insert fits snugly against the wearer's face to create a full seal to protect against wind, dust and airborne debris. Model #: 101-319-001



### FLOW-COATED LENSES

ESS ClearZone™ Lens Coatings provide a dedicated Anti-Fog lens coating on the inside of the lens and a dedicated Anti-Scratch coating on the outside. This process has superior performance to a dip-coated lens.



## CROSSBOW KITS & CONFIGURATIONS



### CROSSBOW 2X KIT

Two Black Frames  
Clear & Smoke Gray Lenses  
Model #: 740-0504



### CROSSBOW TERRAIN TAN 2X KIT

Two Terrain Tan Frames  
Clear & Smoke Gray Lenses  
Model #: 740-0463



### CROSSBOW 2LS KIT

One Black Frame  
Clear & Smoke Gray Lenses  
Model #: 740-0390



### CROSSBOW 3LS KIT

One Black Frame  
Clear, Smoke Gray & Hi-Def Yellow Lenses  
Model #: 740-0387



### CROSSBOW APEL UNIT ISSUE KIT

Black Frame  
Clear & Smoke Gray Lenses  
APEL Retail Model #: 740-0386  
APEL Unit Issue Kit #: 740-0607  
NSN #: 4240-01-630-8327



### CROSSBOW HI-VIS ORANGE 2LS KIT

One Hi-Vis Orange Frame  
Clear & Smoke Gray Lenses  
Model #: EE9007-22



## CROSSBOW KITS & CONFIGURATIONS



### CROSSBOW STEALTH OLIVE 2LS KIT

One Stealth Olive Frame  
Hi-Def Bronze & Smoke Gray Lenses  
Model #: EE9007-21



### CROSSBOW ONE CLEAR

Black Frame  
Clear Lens  
Model #: 740-0615



### CROSSBOW ONE SMOKE GRAY

Black Frame  
Smoke Gray Lens  
Model #: 740-0614



### CROSSBOW TERRAIN TAN ONE SMOKE GRAY

Terrian Tan Frame  
Smoke Gray Lens  
Model #: EE9007-01



### CROSSBOW ONE POLARIZED

Black Frame  
Polarized Gray Lens  
Model #: 740-0494



### CROSSBOW ONE PHOTOCROMIC

Black Frame  
Light-Adapting Photochromic Lens  
Model #: 740-0546

## CROSSBOW KITS & CONFIGURATIONS



### CROSSBOW REPLACEMENT FRAME BLACK

Black frame

Model #: 740-0503

APEL Model#: 740-0446

NSN #: 4240-01-583-5973



### CROSSBOW REPLACEMENT FRAME TERRAIN TAN

Terrain Tan frame

with Nosepiece

Model #: 740-0531

## CROSSBOW ACCESSORY LENSES



### CLEAR LENS

2.4mm high-impact Polycarbonate

VLT 90%

Model #: 740-0425



### PHOTOCHROMIC LENS

2.4mm high-impact Polycarbonate

VLT 12%

Model #: 740-0452



### HI-DEF YELLOW LENS

2.4mm high-impact Polycarbonate

VLT 85%

Model #: 740-0423



### HI-DEF BRONZE LENS

2.4mm high-impact Polycarbonate

VLT 62%

Model #: 740-0509



### HI-DEF COPPER LENS

2.4mm high-impact Polycarbonate

VLT 32%

Model #: 740-0426



### SMOKE GRAY LENS

2.4mm high-impact Polycarbonate

VLT 15%

Model #: 740-0424



### POLARIZED GRAY LENS

1.9mm high-impact Polycarbonate

VLT 15%

Model #: 740-0455



### LPL-5 LENS

2.4mm high-impact Polycarbonate

VLT 48%

Model #: 103-557-001



### LPL-B LENS

2.4mm high-impact Polycarbonate

VLT 57%

Model #: 740-0454



# SUPPRESSOR

[SHOP NOW >>](#)

BALLISTIC EYESHIELD FOR USE WITH HEARING PRO

---



## PRODUCT DESCRIPTION

The Crossbow Suppressor is the first spectacle frame designed for use with over-the-ear hearing protection and comms gear. The Suppressor's ultra-thin temple arms help keep noise out and eliminate hot spots by minimizing interference with the padded seal of ear cups.

**Universal Fit**

# SUPPRESSOR

## BALLISTIC EYESHIELD FOR USE WITH HEARING PRO

**AUTHORIZED  
PROTECTIVE  
EYEWEAR  
LIST (APEL)**



### BALLISTIC PROTECTION STANDARDS

U.S. MIL Spec MIL-PRF-32432A, ANSI Z871-2020, OSHA & CE EN166

Except Polarized Lenses which meet ANSI Z871-2020 (impact) & OSHA

### LENSES

2.4mm High-Impact Polycarbonate • Interchangeable • 100% UVA/UVB Protection  
ESS ClearZone™ Anti-Fog/Anti-Scratch Lens Coating • Distortion-Free ESSOPTICS™



### THIN TEMPLE ARMS

Ultra-thin temple arms eliminate pressure on wearer's head and help keep noise out by minimizing the effect on the padded seal of ear cups.





## SUPPRESSOR KITS & CONFIGURATIONS



**SUPPRESSOR 2X KIT - CLEAR - SMOKE GRAY**  
 Black Crossbow Frame & Black Suppressor Frame  
 Clear & Smoke Gray Lenses  
 Model #: 740-0451



**SUPPRESSOR 2X KIT - CLEAR - HDC**  
 Black Crossbow Frame & Black Suppressor Frame  
 Clear & Hi-Def Copper Lenses  
 Model #: 740-0475



**SUPPRESSOR 2X+ KIT**  
 Black Crossbow Frame & Black Suppressor Frame  
 Clear, Smoke Gray & Hi-Def Copper Lenses  
 Model #: 740-0388



**SUPPRESSOR ONE HDC**  
 Black Suppressor Frame  
 Hi-Def Copper Lens  
 Model #: 740-0472



**SUPPRESSOR ONE SMOKE GRAY**  
 Black Suppressor Frame  
 Smoke Gray Lens  
 Model #: EE9007-03  
 APEL Retail Model #: EE9007-12



**SUPPRESSOR ONE CLEAR**  
 Black Suppressor Frame  
 Clear Lens  
 Model #: EE9007-04  
 APEL Retail Model #: EE9007-13



**SUPPRESSOR 3LS KIT BLACK**  
 Black Suppressor Frame  
 Clear, Smoke Gray & Hi-Def Yellow Lenses  
 Model #: EE9007-10



**SUPPRESSOR 3LS KIT TERRAIN TAN**  
 Terrain Tan Suppressor Frame  
 Clear, Smoke Gray & Hi-Def Yellow Lenses  
 Model #: EE9007-11



**SUPPRESSOR BLACK FRAME**  
 Terrain Tan Suppressor Frame  
 Model #: 740-0450  
 APEL Model #: 740-0561  
 NSN #: 4240-01-679-3323



**SUPPRESSOR TERRAIN TAN FRAME**  
 Terrain Tan Suppressor Frame  
 Model #: 740-0532





# CROSSHAIR

[SHOP NOW >>](#)

## PRIMARY EYE PROTECTION

---



### PRODUCT DESCRIPTION

This Crosshair is an entry level eyeshield that provides all day comfort and universal fit. The Crosshair benefits from complete compatibility with the ESS CrossSeries eyeshield platform for customization in any environment. Crosshair is fully U.S. Army UPLC compatible.

#### Universal Fit







# CROSSHAIR

## PRIMARY EYE PROTECTION



### BALLISTIC PROTECTION STANDARDS

U.S. MIL Spec MIL-PRF-32432A, ANSI Z871-2020, OSHA & CE EN166

### LENSES

2.4mm high-impact Polycarbonate • Interchangeable • 100% UVA/UVB Protection  
ESS ToughZone™ Anti-Scratch Lens Coating • Distortion-Free ESSOPTICS™



### CROSS-COMPATIBLE EYESHIELDS

The ESS Cross-Series™ is a revolutionary new systems approach to ballistic eye protection. All Cross-Series™ components and accessories can be interchanged between products in this fully cross-compatible eyeshield platform: the entry-level Crosshair™ with core performance, Crossbow® with anti-fog / anti-scratch lenses, the Suppressor™ for use with hearing protection, and CrossBlade™ the latest ESS eyeshield, featuring a modular fit system and premium components.

**Engage. Adapt. Excel.**

### ESS CROSS-SERIES INCLUDES:

- ESS CrossBlade Standard
- ESS CrossBlade NARO
- ESS Crossbow
- ESS Crossbow Suppressor
- ESS Crosshair



#### CLEAR LENS

2.4mm high-impact Polycarbonate  
VLT 90%

**Model #: 740-0479**



#### HI-DEF YELLOW LENS

2.4mm high-impact Polycarbonate  
VLT 85%

**Model #: 740-0477**



#### HI-DEF COPPER LENS

2.4mm high-impact Polycarbonate  
VLT 32%

**Model #: 740-0478**



#### SMOKE GRAY LENS

2.4mm high-impact Polycarbonate  
VLT 15%

**Model #: 740-0480**

## CROSSHAIR KITS & CONFIGURATIONS



### CROSSHAIR 2X KIT

Two Black Frames  
Clear & Smoke Gray Lenses  
Model #: EE9014-02



### CROSSHAIR 2LS KIT

Black Frame  
Clear & Smoke Gray Lenses  
Model #: EE9014-04



### CROSSHAIR 3LS KIT

Black Frame  
Clear & Smoke Gray Lenses  
Model #: EE9014-05



### CROSSHAIR ONE SMOKE GRAY

Black Frame  
Smoke Gray Lens  
Model #: EE9014-08



### CROSSHAIR UNIT ISSUE KIT

Black Frame  
Clear & Smoke Gray Lenses  
Unit Issue Kit #: EE9014-11  
NSN #: 4240-01-630-6352



### CROSSHAIR ONE CLEAR

Black Frame  
Clear Lens  
Model #: EE9014-07



# ICE & ICE NARO

[SHOP NOW >>](#)

## FRAMELESS BALLISTIC EYESHIELD

---



### PRODUCT DESCRIPTION

ESS ICE & ICE NARO eyeshields offer a unique combination of impact resistance, unrestricted view, and interchangeable lenses for “frameless” eye protection in any light. Reinforced PosiLock™ temples provide a secure and adjustable fit through their pliable earwires and variable-length arms.

ICE NARO is approximately 10% narrower than the standard ICE and is engineered for smaller faces.

**Medium/Large & NARO Medium/Small Fit**

**Note: ICE and ICE NARO are not part of the Cross-Series.**

# ICE & ICE NARO

## FRAMELESS BALLISTIC EYESHIELD

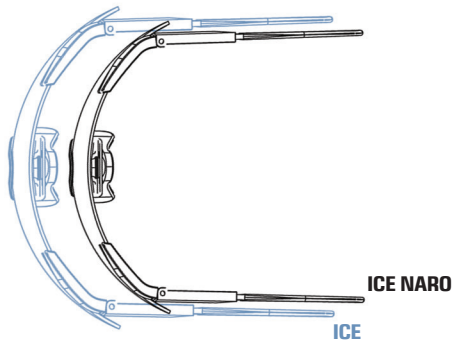


### BALLISTIC PROTECTION STANDARDS

U.S. MIL Spec MIL-PRF-32432, ANSI Z871-2020, OSHA & CE EN166

### LENSES

2.4mm high-impact Polycarbonate • Interchangeable • 100% UVA/UVB Protection  
ESS ToughZone™ Anti-Scratch Lens Coating • Distortion-Free ESSOPTICS™



### ICE vs ICE NARO

The ESS ICE NARO shares the same features as the ESS ICE Eyeshield. The difference is its overall width: the ICE NARO is about 10% narrower.



### ADJUSTABLE TEMPLE ARMS

ESS ICE & ICE NARO Eyeshields feature fully adjustable temple arms that can be extended and bent for a customized and secure fit.





## ICE KITS & CONFIGURATIONS



### ICE 2X KIT

Two Black Frames  
Clear & Smoke Gray Lenses  
Model #: 740-0003



### ICE 2X UNIT ISSUE KIT

Two Black Frames  
Clear & Smoke Gray Lenses  
Model #: 740-0004  
NSN #: 4040-01-554-5699



### ICE TACTICAL KIT

Two Black Regular Frames  
Clear, Smoke Gray, & Hi-Def Copper Lenses  
Model #: 740-0007



### ICE 3LS KIT

One Black Frame  
Clear, Smoke Gray & Hi-Def Yellow Lenses  
Model #: 740-0020



### ICE SMOKE GRAY KIT

Black Regular Frame  
Smoke Gray Lens  
Model #: 740-0440



### ICE ONE KIT

Black Regular Frame  
Clear Lens  
Model #: 740-0005

## ICE NARO KITS & CONFIGURATIONS



### ICE NARO 2X KIT

Two Black Frames  
Clear & Smoke Gray Lenses  
Model #: 740-0001



### ICE NARO 2X UNIT ISSUE KIT

Two Black Frames  
Clear & Smoke Gray Lenses  
Model #: 740-0002  
NSN #: 4240-01-554-5696

## ICE ACCESSORY LENSES



### CLEAR LENS

2.4mm high-impact Polycarbonate  
VLT 90%  
Model #: 740-0071



### HI-DEF YELLOW LENS

2.4mm high-impact Polycarbonate  
VLT 85%  
Model #: 740-0088



### HI-DEF BRONZE LENS

2.4mm high-impact Polycarbonate  
VLT 62%  
Model #: 101-658-001



### HI-DEF COPPER LENS

2.4mm high-impact Polycarbonate  
VLT 32%  
Model #: 740-0086



### SMOKE GRAY LENS

2.4mm high-impact Polycarbonate  
VLT 15%  
Model #: 740-0011

## ICE NARO ACCESSORY LENSES



### CLEAR LENS

2.4mm high-impact Polycarbonate  
VLT 90%  
Model #: 740-0078



### HI-DEF YELLOW LENS

2.4mm high-impact Polycarbonate  
VLT 85%  
Model #: 740-0077



### HI-DEF BRONZE LENS

2.4mm high-impact Polycarbonate  
VLT 62%  
Model #: 101-658-002



### HI-DEF COPPER LENS

2.4mm high-impact Polycarbonate  
VLT 32%  
Model #: 740-0080



### SMOKE GRAY LENS

2.4mm high-impact Polycarbonate  
VLT 15%  
Model #: 740-0079







# ESS LASER PROTECTION



- LPL-5 VISIBLE
- LPL-3B VISIBLE / NEAR IR
- LPL-B NEAR INFRARED



# LASER PROTECTION

[SHOP NOW >>](#)

## EYE PROTECTION AGAINST MULTIPLE LASER THREATS

---



### PRODUCT DESCRIPTION

Lasers can cause severe eye damage. Because a laser is a focused beam of light, even brief exposure can cause a retinal lesion or scotoma. In response to the increase in lasing incidents, ESS has developed a series of (LPL) Laser Protective Lenses. ESS LPL are available in three distinct tints that block specific wavelengths of visible and non-visible infrared light. ESS uses a specific proprietary blend of dye to optimize the Optical Density and VLT of our lenses to not only ensure protection from laser emitting devices but also allow the wearer to operate in a wide variety of light conditions.







# LASER PROTECTION

## LPL-5 : VISIBLE GREEN LASERS



### BALLISTIC PROTECTION STANDARDS

U.S. MIL Spec MIL-PRF-32432A, ANSI Z871-2020, OSHA & CE

### LENSES

2.4mm -2.8mm High-Impact Polycarbonate • Interchangeable • 100% UVA/UVB Protection  
ESS ClearZone™ Anti-Fog/Anti-Scratch Lens Coating • Distortion-Free ESSOPTICS™

### LPL-5 LENS TECHNOLOGY

ESS LPL-5 lenses are specifically formulated to maximize protection **against visible green lasers.**

Lens tint of 48% VLT for day & night Ops.

**Wavelength 532nm @ OD 2.5**

**VLT 48% : Blocks Visible Green Lasers**

### LPL-5 ACCESSORY LENSES



#### CROSSBLADE STD LPL-5 LENS

2.4mm high-impact Polycarbonate  
VLT 48%

**Model #:** 102-189-015



#### CROSSBLADE NARD LPL-5 LENS

2.4mm high-impact Polycarbonate  
VLT 48%

**Model #:** 102-190-015



#### CROSSBOW LPL-5 LENS

2.4mm high-impact Polycarbonate  
VLT 48%

**Model #:** 103-557-001



#### INFLUX LPL-5 LENS

2.8mm high-impact Polycarbonate  
VLT 48%

**Model #:** 101-289-008



#### PROFILE NVG LPL-5 LENS

2.8mm high-impact Polycarbonate  
VLT 48%

**Model #:** 101-288-004



## LPL-5 VISIBLE LASER PROTECTION KITS & CONFIGURATIONS



### CROSSBLADE LPL-5 3LS KIT

One Black Frame  
 Standard Clear, Smoke Gray & LPL-5 Lenses  
 Model #: EE9032-21 (Standard Size)  
 NSN #: 4240-01-F05-3650



### CROSSBLADE NARO LPL-5 3LS KIT

One Black Frame  
 NARO Clear, Smoke Gray & LPL-5 Lenses  
 Model #: EE9034-13 (Smaller Size)



### CROSSBLADE LPL-5 ONE

One Black Frame with Single LPL-5 Lens  
 STD Model #: EE9032-20 (Standard Size)  
 NARO Model #: EE9034-12 (Smaller Size)



### CROSSBOW LPL-5 ONE

One Black Frame with Single LPL-5 Lens  
 Model #: EE9007-19 (Universal Fit)  
 One Terrain Tan Frame with Single LPL-5 Lens  
 Model #: EE9007-20 (Universal Fit)



### INFLUX LPL-5 KIT

Black Influx Goggle  
 LPL-5 Lens  
 Model #: EE7018-33



### PROFILE NVG LPL-5 KIT

Black Profile NVG Goggle  
 LPL-5 Lens  
 Model #: EE7001-07



# LASER PROTECTION

## LPL-3B : VISIBLE GREEN & NON-VISIBLE INFRARED LASERS



### BALLISTIC PROTECTION STANDARDS

U.S. MIL Spec MIL-PRF-32432A, ANSI Z871-2020, OSHA & CE

### LENSES

2.4mm -2.8mm High-Impact Polycarbonate • Interchangeable • 100% UVA/UVB Protection  
ESS ClearZone™ Anti-Fog/Anti-Scratch Lens Coating • Distortion-Free ESSOPTICS™

### LPL-3B LENS TECHNOLOGY

ESS LPL-3B lenses are specifically formulated to maximize protection **against 3-Bands of laser wavelengths.**

Lens tint of 30% VLT for dawn to dusk Ops.

**Wavelength 532nm @ OD 4.0+**

**Wavelengths 800-870nm @ OD 4.0+**

**Wavelength 1064nm @ OD 6.0+**

**VLT 30% : Blocks Visible Green & Non-Visible InfraRed Lasers**

### LPL-3B ACCESSORY LENSES



#### CROSSBLADE STD LPL-3B LENS

2.4mm high-impact Polycarbonate  
VLT 30%

Model #: 102-189-016



#### CROSSBLADE NARD LPL-3B LENS

2.4mm high-impact Polycarbonate  
VLT 30%

Model #: 102-190-016



#### INFLUX LPL-3B LENS

2.8mm high-impact Polycarbonate  
VLT 30%

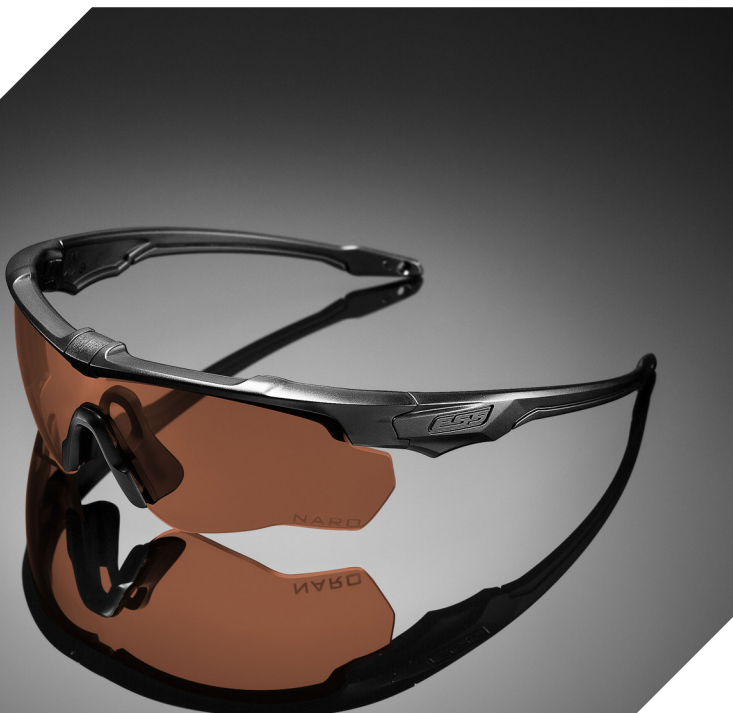
Model #: 101-289-009



#### PROFILE NVG LPL-3B LENS

2.8mm high-impact Polycarbonate  
VLT 30%

Model #: 101-288-005



## LPL-3B 3-BAND LASER PROTECTION KITS & CONFIGURATIONS



### CROSSBLADE LPL-3B 3LS KIT

One Black Frame  
 Standard Clear, Smoke Gray & LPL-3B Lenses  
 Model #: EE9032-23 (Standard Size)  
 NSN #: 4240-01-F05-3651



### CROSSBLADE NARO LPL-3B 3LS KIT

One Black Frame  
 NARO Clear, Smoke Gray & LPL-3B Lenses  
 Model #: EE9034-15 (Smaller Size)



### CROSSBLADE LPL-3B ONE

One Black Frame with Single LPL-3B Lens  
 STD Model #: EE9032-22 (Standard Size)



### CROSSBLADE NARO LPL-3B ONE

One Black Frame with Single LPL-3B Lens  
 NARO Model #: EE9034-14 (Smaller Size)



### INFLUX LPL-3B KIT

Black Influx Goggle  
 LPL-3B Lens  
 Model #: EE7018-34  
 NSN #: 4240-01-F05-3653



### PROFILE NVG LPL-3B KIT

Black Profile NVG Goggle  
 LPL-3B Lens  
 Model #: EE7001-08



# LASER PROTECTION

## LPL-B : MULTIBAND NON-VISIBLE INFRARED LASERS



### BALLISTIC PROTECTION STANDARDS

U.S. MIL Spec MIL-PRF-32432A, ANSI Z871-2020, OSHA & CE

### LENSES

2.4mm -2.8mm High-Impact Polycarbonate • Interchangeable • 100% UVA/UVB Protection  
ESS ClearZone™ Anti-Fog/Anti-Scratch Lens Coating • Distortion-Free ESSOPTICS™

### LPL-B LENS TECHNOLOGY

ESS LPL-B lenses are specifically formulated to maximize protection **against non-visible infrared lasers.**

Lens tint of 57% VLT for day & night Ops.

**Wavelengths 820-1080nm @ OD 4.0+**

**Wavelength 1064nm @ OD 5.0+**

**VLT 57% : Blocks Non-Visible InfraRed Lasers**



## LPL-B MULTI-BAND NON-VISIBLE INFRARED LASER PROTECTION KITS & CONFIGURATIONS



### CROSSBOW/SUPPRESSOR LPL-B 2X+ KIT

Crossbow Eyeshield with Smoke Gray Lens, Suppressor Frame (Thin Temple Arms) with Clear Lens, LPL-B Lens & Large Zippered Hard Case  
**Model #:** 740-0428 (Universal Fit)  
**NSN #:** 4240-01-F90-0561



### INFLUX LPL-B UNIT ISSUE KIT

Terrain Tan Influx Goggle with LPL-B, Smoke Gray & Clear Lenses, UPLC Rx Adapter & Soft Goggle Case  
**Model #:** EE7018-06  
**NSN #:** 4240-01-F05-3652



### PROFILE NVG LPL-B UNIT ISSUE KIT

Tan 499 Profile NVG Goggle with LPL-B, Smoke Gray, Clear Lenses & Soft Goggle Case  
**Model #:** 740-0430

## LPL-B ACCESSORY LENSES



**CROSSBLADE STD LPL-B LENS**  
 2.4mm high-impact Polycarbonate  
 VLT 57%  
**Model #:** 102-189-010



**CROSSBLADE NARD LPL-B LENS**  
 2.4mm high-impact Polycarbonate  
 VLT 57%  
**Model #:** 102-190-010



**CROSSBOW LPL-B LENS**  
 2.4mm high-impact Polycarbonate  
 VLT 57%  
**Model #:** 740-0454



**INFLUX LPL-B LENS**  
 2.8mm high-impact Polycarbonate  
 VLT 57%  
**Model #:** 101-289-004



**PROFILE NVG LPL-B LENS**  
 2.8mm high-impact Polycarbonate  
 VLT 57%  
**Model #:** 740-0429







# ESS MILITARY GOOGLES



- INFLUX
- PROFILE NVG
- JUMPMASTER
- STRIKER



# INFLUX

[SHOP NOW >>](#)

## APEL BALLISTIC GOGGLE WITH ADJUSTABLE VENTILATION

---



### PRODUCT DESCRIPTION

By virtually eliminating lens fogging, the ESS Influx military goggle allows troops to maintain full situational awareness in dynamic tactical environments. As part of the goggles patented Adjustable Ventilation System (AVS), the Influx RotoClip™ silently pivots the position of the lens inside the goggle frame: choose either a dust-free, fully-sealed mode or a fog-free, open-ventilation mode. With Influx, troops can always see clearly and act fast when seconds count. In addition to controlling the AVS, the RotoClip enables one of the fastest lens exchange systems ever found in a goggle. Operators can switch between lens tints with speed and ease, accelerating environmental adaptability and shortening down time. Combined with a host of other significant advancements, the Influx stands ready to cut through the fog of war and help clear a path to victory.

**BUILT FOR BATTLE.™ TOUGH FOR LIFE.™**

# INFLUX

## APEL BALLISTIC GOGGLE WITH ADJUSTABLE VENTILATION

AUTHORIZED  
PROTECTIVE  
EYEWEAR  
LIST (APEL)



### BALLISTIC PROTECTION STANDARDS

U.S. MIL Spec MIL-PRF-32432A, ANSI Z871-2020, OSHA & CE

### LENSES

3mm High-Impact Polycarbonate • Interchangeable • 100% UVA/UVB Protection  
ESS ClearZone™ Anti-Fog/Anti-Scratch Lens Coating • Distortion-Free ESSOPTICS™



### ADJUSTABLE VENTILATION SYSTEM (AVS)™

The Influx Goggle's RotoClip™ silently pivots the position of the lens inside the goggle frame: choose either a dust-free, fully-sealed mode or a fog-free, open-ventilation mode.



### INFLUX PIVOT GOGGLES

ESS Pivot™ Goggles can be mounted to helmets equipped with Rail Systems. The ESS Pivot strap enables easy donning and doffing, rapid strap adjustment, and offers multiple secure stowage options in the field.





## INFLUX KITS & CONFIGURATIONS



### INFLUX TERRAIN TAN

Terrain Tan Influx Frame  
Clear & Smoke Gray Lenses  
Model #: EE7018-02



### INFLUX BLACK

Black Influx Frame  
Clear & Smoke Gray Lenses  
Model #: EE7018-01



### INFLUX FOLIAGE GREEN

Foliage Green Influx Frame  
Clear & Smoke Gray Lenses  
Model #: EE7018-07



### INFLUX WHITE 3LS KIT

White Influx Frame with Fleece Face Foam  
Clear, Smoke Gray, & Alpenglow Lenses  
Designed for Cold Weather Applications  
Model #: EE7018-23



### INFLUX APEL UNIT ISSUE KIT

Terrain Tan Influx Frame  
Clear & Smoke Gray Lenses  
APEL Retail Model #: EE7018-10  
APEL Unit Issue Kit #: EE7018-04  
NSN #: 4240-01-630-6343



### AIRBOSS - NAVY FLIGHT DECK GOGGLE

Gray Frame, Full Strap with SpeedClips™  
Clear & Smoke Gray Lenses  
Designed for Use on Aircraft Carriers  
Issue Kit #: EE7018-20  
NSN #: 4240-01-492-5720

## INFLUX PIVOT KITS & CONFIGURATIONS



### INFLUX PIVOT BLACK

Black Frame with Ops Core® ARC™ Mounting Kit  
Clear & Smoke Gray Lenses  
Model #: EE7018-18

Black Frame without Mounting Kit  
Clear & Smoke Gray Lenses  
Model #: EE7018-19

### INFLUX PIVOT TERRAIN TAN

Terrain Tan Frame with Ops Core® ARC™ Mounting Kit  
Clear & Smoke Gray Lenses  
Model #: EE7018-21

Terrain Tan Frame without Mounting Kit  
Clear & Smoke Gray Lenses  
Model #: EE7018-22

## INFLUX PIVOT ACCESSORIES



**INFLUX GRAY PIVOT STRAP**  
Pivot Strap & Assembly Kit  
Model #: 102-196-001



**INFLUX GRAY PIVOT STRAP**  
Pivot Strap Only  
Model #: 102-196-002



**INFLUX FOLIAGE GREEN PIVOT STRAP**  
Pivot Strap & Assembly Kit  
Model #: 102-196-008



**INFLUX TERRAIN TAN PIVOT STRAP**  
Pivot Strap & Assembly Kit  
Model #: 102-196-003



**INFLUX TERRAIN TAN PIVOT STRAP**  
Pivot Strap Only  
Model #: 102-196-004

## INFLUX ACCESSORY LENSES



**CLEAR LENS**  
3mm high-impact Polycarbonate  
VLT 90%  
Model #: 101-289-002



**HI-DEF YELLOW LENS**  
3mm high-impact Polycarbonate  
VLT 85%  
Model #: 101-289-005



**HI-DEF BRONZE LENS**  
3mm high-impact Polycarbonate  
VLT 62%  
Model #: 101-289-007



**ALPENGLow LENS**  
3mm high-impact Polycarbonate  
VLT 32%  
Model #: 101-289-003



**SMOKE GRAY LENS**  
3mm high-impact Polycarbonate  
VLT 15%  
Model #: 101-289-001



**LPL-5 LENS**  
2.8mm high-impact Polycarbonate  
VLT 48%  
Model #: 101-289-008



**LPL-38 LENS**  
2.8mm high-impact Polycarbonate  
VLT 30%  
Model #: 101-289-009



**LPL-B LENS**  
2.8mm high-impact Polycarbonate  
VLT 57%  
Model #: 101-289-004



# PROFILE NVG

[SHOP NOW >>](#)

## LOW PROFILE BALLISTIC GOGGLE

---



### PRODUCT DESCRIPTION

Battle tested in the most demanding theaters, the patented ESS Profile NVG is a low-profile, night-vision-compatible goggle which has been authorized and issued by the U.S. Army, USMC, USAF, and numerous NATO governments. The goggle's full-perimeter ventilation and filtration system minimizes lens fogging and filters airborne particles, dust and splashes. Advanced ClearZone™ FlowCoat lenses provide an optimal combination of anti-scratch coatings on the outside of the lens and anti-fog coatings on the inside.

BUILT FOR BATTLE.™ TOUGH FOR LIFE.™

# PROFILE NVG

## LOW PROFILE BALLISTIC GOGGLE



### BALLISTIC PROTECTION STANDARDS

U.S. MIL Spec MIL-PRF-32432A, ANSI Z871-2020, OSHA & CE

### LENSES

2.8mm High-Impact Polycarbonate • Interchangeable • 100% UVA/UVB Protection  
ESS ClearZone™ Anti-Fog/Anti-Scratch Lens Coating • Distortion-Free ESSOPTICS™



### BATTERY POWERED ANTI-FOG AIRFLOW

Powered by a single AA battery, the TurboFan system draws fresh airflow in through the lower edge of the goggle frame and forces humid air out the top at around 13,000 rpm.



### PROFILE TURBOFAN BLACK

Black TurboFan Frame  
Clear & Smoke Gray Lenses  
Model #: 740-0131

### PROFILE ASIAN FIT TURBOFAN BLACK

Black Asian Fit TurboFan Frame  
Clear & Smoke Gray Lenses  
Model #: 740-0132





## PROFILE NVG KITS & CONFIGURATIONS



### PROFILE NVG TERRAIN TAN

Terrain Tan NVG Frame  
 Clear & Smoke Gray Lenses  
 Model #: 740-0500  
 Unit Issue Kit #: 740-0609  
 NSN #: 4240-01-630-7259



### PROFILE NVG BLACK

Black NVG Frame  
 Clear & Smoke Gray Lenses  
 Model #: 740-0499  
 Unit Issue Model #: 740-0124  
 NSN #: 4240-01-504-6222



### PROFILE NVG FOLIAGE GREEN

Foliage Green NVG Frame  
 Clear & Smoke Gray Lenses  
 Model #: 740-0501  
 Unit Issue Kit #: 740-0129  
 NSN #: 4240-01-540-5585



### FLIGHT PRO

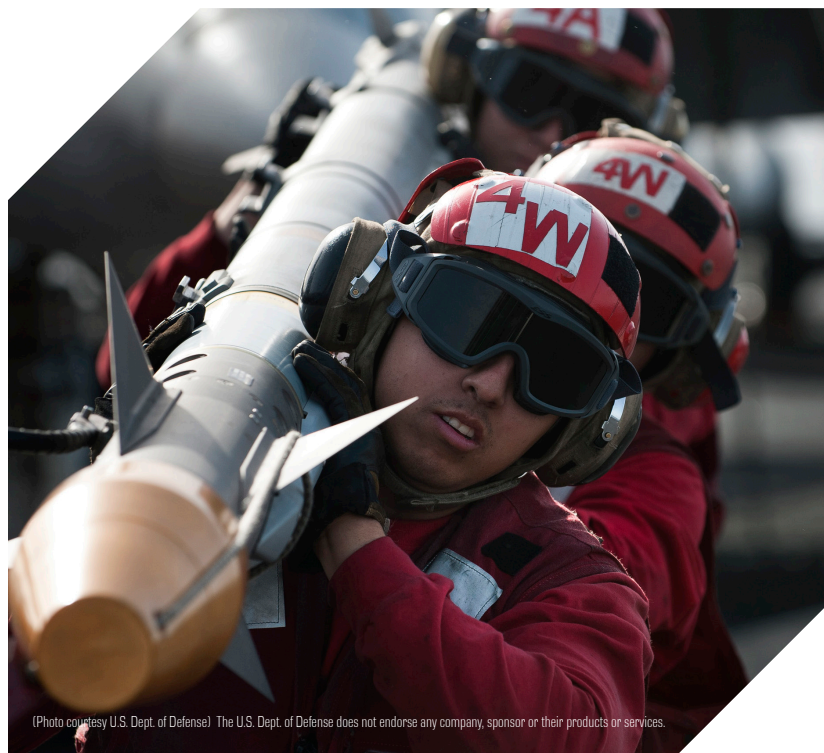
Gray Frame - Aircraft Carrier Deck Goggle  
 Clear & Smoke Gray Lenses  
 Model #: 740-0410  
 NSN #: 1680-01-602-5906



### PROFILE NVG ASIAN FIT\* BLACK

Black Asian Fit Frame  
 Clear & Smoke Gray Lenses  
 Model #: 740-0123

\*ESS Profile NVG Asian Fit Goggle has a flatter lens curvature & soft-yet-durable molded face padding for increased comfort and fit.



## PROFILE PIVOT KITS & CONFIGURATIONS



### PROFILE PIVOT GRAY

Gray Frame with Ops Core® ARC™ Mounting Kit  
Clear & Smoke Gray Lenses  
Model #: 740-0516



### PROFILE PIVOT TEAM WENDY™ GOGGLE

Gray Frame with Pivot Strap  
Clear & Smoke Gray Lenses  
Model #: EE7001-01

## PROFILE PIVOT ACCESSORIES



### PROFILE PIVOT GRAY STRAP

Pivot Strap & Assembly Kit  
Model #: 740-0495



### OPS CORE® RAIL ADAPTER KIT

Mounting Posts & Rail Adapter Kit  
Model #: 740-0488



### PROFILE PIVOT TW STRAP

Pivot Strap Only  
Model #: 101-955-001

Team Wendy Rail Adapter available at:  
[www.teamwendy.com](http://www.teamwendy.com)

## PROFILE NVG & ASIAN FIT ACCESSORY LENSES



### CLEAR LENS

3mm high-impact Polycarbonate  
VLT 90%  
Model #: 740-0113



### CLEAR - ASIAN FIT LENS

3mm high-impact Polycarbonate  
VLT 90%  
Model #: 740-0260



### HI-DEF YELLOW LENS

3mm high-impact Polycarbonate  
VLT 85%  
Model #: 740-0121



### HI-DEF YELLOW - ASIAN FIT LENS

3mm high-impact Polycarbonate  
VLT 85%  
Model #: 740-0258



### HI-DEF BRONZE LENS

3mm high-impact Polycarbonate  
VLT 62%  
Model #: 740-0508



### SMOKE GRAY LENS

3mm high-impact Polycarbonate  
VLT 15%  
Model #: 740-0119



### SMOKE GRAY - ASIAN FIT LENS

3mm high-impact Polycarbonate  
VLT 15%  
Model #: 740-0259



### LPL-5 LENS

2.8mm high-impact Polycarbonate  
VLT 48%  
Model #: 101-288-004



### LPL-3B LENS

2.8mm high-impact Polycarbonate  
VLT 30%  
Model #: 101-288-005



### LPL-B LENS

2.8mm high-impact Polycarbonate  
VLT 57%  
Model #: 740-0429



# JUMPMASTER

[SHOP NOW >>](#)

## LOW PROFILE BALLISTIC GOGGLE

---



### PRODUCT DESCRIPTION

The ESS Jumpmaster is specifically designed for Airborne and other high-speed applications. It is compatible with night vision devices and multiple helmet types with three mission-specific strap configurations. The Jumpmaster features Anti-microbial OpFoam™ face padding which increases comfort & fit. Its 2.6mm polycarbonate lenses provide ballistic protection, ESSOPTICS™ distortion-free optical precision, and ESS ClearZone™ dedicated Anti-fog and Anti-scratch lens coatings.

BUILT FOR BATTLE.™ TOUGH FOR LIFE.™







# JUMPMASTER

## LOW PROFILE BALLISTIC GOGGLE



### BALLISTIC PROTECTION STANDARDS

U.S. MIL Spec MIL-PRF-32432A, ANSI Z871-2020, OSHA & CE EN166

### LENSES

2.6mm High-Impact Polycarbonate • Interchangeable • 100% UVA/UVB Protection  
ESS ClearZone™ Anti-Fog/Anti-Scratch Lens Coating • Distortion-Free ESSOPTICS™



### MADE FOR HIGH VELOCITY

ESS Jumpmaster Goggle's Aerodynamic Profile is ideal for High-Speed Activities such as HALO Insertions.



### INFLUX & JUMPMASTER STRAPS

ESS Jumpmaster & ESS Influx Goggle straps are cross-compatible and interchangeable with each other. (Shown with Terrain Tan Pivot Strap)



## JUMPMASTER KITS & CONFIGURATIONS



**JUMPMASTER BLACK**  
 Black Jumpmaster Frame  
 Smoke Gray Lens  
 Model #: EE7035-01



**JUMPMASTER BLACK**  
 Black Jumpmaster Frame  
 Clear Lens  
 Model #: EE7035-02



**JUMPMASTER TERRAIN TAN**  
 Terrain Tan Jumpmaster Frame  
 Smoke Gray Lens  
 Model #: EE7035-03



**JUMPMASTER TERRAIN TAN**  
 Terrain Tan Jumpmaster Frame  
 Clear Lens  
 Model #: EE7035-04

## JUMPMASTER ACCESSORIES



**CLEAR LENS/BLACK**  
 2.6mm high-impact Polycarbonate  
 VLT 90%  
 Model #: 102-856-003



**SMOKE GRAY/BLACK**  
 2.6mm high-impact Polycarbonate  
 VLT 15%  
 Model #: 102-856-004



**CLEAR LENS/TERRAIN TAN**  
 2.6mm high-impact Polycarbonate  
 VLT 90%  
 Model #: 102-856-001



**SMOKE GRAY/TERRAIN TAN**  
 2.6mm high-impact Polycarbonate  
 VLT 15%  
 Model #: 102-856-002



**VELCRO® SPLIT STRAP**  
 Gray 2-Piece Strap, Compatible  
 with Jumpmaster & Influx Goggles  
 Model #: 102-386-001



**VELCRO® SPLIT STRAP**  
 Terrain Tan 2-Piece Strap, Compatible  
 with Jumpmaster & Influx Goggles  
 Model #: 102-386-002



# STRIKER

[SHOP NOW >>](#)

## MILITARY/TACTICAL GOGGLE SERIES

---



### PRODUCT DESCRIPTION

The ESS Striker features closed-cell facepadding for superior durability, ease of cleaning and long-lasting comfort. Full-perimeter Hi-Flow™ ventilation & filtration system permits airflow while filtering out airborne particles, air blasts, and splashes. The ESS Land Ops™ goggle frame is roomy enough for use over prescription eyewear.

BUILT FOR BATTLE.™ TOUGH FOR LIFE.™







# STRIKER

## MILITARY/TACTICAL GOGGLE SERIES



### BALLISTIC PROTECTION STANDARDS

U.S. MIL Spec MIL-PRF-32432A, ANSI Z871-2020, OSHA & CE

### LENSES

2.6mm High-Impact Polycarbonate • Interchangeable • 100% UVA/UVB Protection  
ESS TOUGHZone™ Anti-Scratch Lens Coating • Distortion-Free ESSOPTICS™



(U.S. Marine Corps photo by Staff Sgt. Artur Shvartsberg)\*

### ROOMY FRAME ALLOWS PRESCRIPTION GLASSES

ESS Striker Goggle frames are roomy enough to fit over user's prescription glasses.



(U.S. Navy photo by James Evans)\*

\*The U.S. Dept. of Defense does not endorse any company, sponsor or their products or services.

## STRIKER KITS & CONFIGURATIONS



### LAND OPS TERRAIN TAN

Terrain Tan Striker Frame  
Clear & Smoke Gray Lenses

Model #: 740-0207

Unit Issue Model #: 740-0206

NSN #: 4240-01-540-5580



### LAND OPS FOLIAGE GREEN

Foliage Green Striker Frame  
Clear & Smoke Gray Lenses

Model #: 740-0502

Unit Issue Model #: 740-0202

NSN #: 4240-01-540-5576



### FLIGHT DECK

Gray Striker Frame - Aircraft Carrier Deck Goggle  
Clear & Smoke Gray Lenses

Model #: 740-0333

Unit Issue Model #: 740-0197



### STRIKER ASIAN FIT

Black Asian Fit Striker Frame  
Clear & Smoke Gray Lenses

Model #: 740-0247



### TACTICAL XT BLACK

Black Striker Frame  
Clear Lens

Model #: 740-0243

## STRIKER ACCESSORY LENSES



### CLEAR LENS

2.4mm high-impact Polycarbonate  
VLT 90%

Model #: 740-0192



### HI-DEF YELLOW LENS

2.4mm high-impact Polycarbonate  
VLT 85%

Model #: 740-0315



### SMOKE GRAY LENS

2.4mm high-impact Polycarbonate  
VLT 15%

Model #: 740-0227







# ESS FIRE GOGGLES



- STRUCTURAL GOGGLES  
NFPA 1971
- WILDLAND GOGGLES  
NFPA 1977



# STRUCTURAL FIRE GOGGLES

[SHOP NOW >>](#)

NFPA 1971 CERTIFIED FIREFIGHTING GOGGLES

---



## PRODUCT DESCRIPTION

ESS offers two types of Structural Goggles: **FirePro-1971™ Series** based on the the low-profile Profile NVG Goggle Series Frame & the **Innerzone™ Series** which is based on the roomier Striker Frame.

ESS Structural goggles can be worn alone, on a helmet, or in conjunction with faceshields or flip-downs. ESS Structural goggles are compliant with **NFPA 1971-2018**, including the **500°F for 5-minute oven test**. The goggle's full-perimeter ventilation and filtration system minimizes lens fogging and filters airborne particles, dust and splashes. The patented Speed-Clip™ strap system facilitates quick strap adjustment, even with gloves on.

BUILT FOR BATTLE.™ TOUGH FOR LIFE.™

# STRUCTURAL FIRE GOGGLES

## NFPA 1971 CERTIFIED FIREFIGHTING GOGGLES



### PROTECTION STANDARDS

NFPA 1971-2018 Edition • ANSI Z871-2015 • U.S. Federal OSHA

### LENSES

2.6mm High-Impact Polycarbonate • Interchangeable • 100% UVA/UVB Protection  
ESS ToughZone™ Anti-Scratch Lens Coating • Distortion-Free ESSOPTICS™



### ESS INNERZONE SERIES GOGGLES

ESS Innerzone Structural Goggles can accommodate fitting over most prescription eyewear.





## STRUCTURAL FIRE GOGGLE - FIREPRO-1971 KITS & CONFIGURATIONS



### FIREPRO-1971 EX-1

Gray NFPA Compliant 1971 Frame  
2-Piece Strap with Thumb-Screw Mounting Brackets  
Model #: 740-0535



### FIREPRO-1971 EX-2

Gray NFPA Compliant 1971 Frame  
2-Piece Strap with Snap-On/Snap-Off Mounting Brackets  
Model #: 740-0536



### FIREPRO-1971 FS

Gray NFPA Compliant 1971 Frame  
With Full Strap and Two Velcro Tabs  
Model #: 740-0537

## FIREPRO-1971 GOGGLE ACCESSORIES



**FIREPRO 1971 CLEAR LENS**  
2.6mm high-impact Polycarbonate  
VLT 90%  
Model #: 740-0585



**FIREPRO 1971 EX-1 & 2 STRAP**  
Two-Piece Heat Resistance  
Nomex Strap  
Model #: 740-0558



**FIREPRO 1971 EX-FS STRAP**  
Heat Resistance Nomex  
Full Strap  
Model #: 740-0590



**NOMEX® HEAT SLEEVE**  
Protective Heat Sleeve  
with Reflective ESS logo  
Model #: 740-0228



**SEMI-PERMANENT BRACKET**  
Thumb screws secure strap to  
helmet brim mounting brackets  
Model #: 740-0201



**SNAP ON/ OFF BRACKET**  
Strap ends snap on and off helmet  
brim mounting brackets  
Model #: 740-0251

## STRUCTURAL FIRE GOGGLE - INNERZONE KITS & CONFIGURATIONS



### INNERZONE 1

Gray NFPA Compliant 1971 Frame  
2-Piece Strap with Thumb-Screw Mounting Brackets  
Model #: 740-0264



### INNERZONE 2

Gray NFPA Compliant 1971 Frame  
2-Piece Strap with Snap-On/Snap-Off Mounting Brackets  
Model #: 740-0268



### INNERZONE 3

Gray NFPA Compliant 1971 Frame  
With Full Strap and Two Velcro Tabs  
Model #: 740-0273

## INNERZONE FIRE GOGGLE ACCESSORIES



**INNERZONE 1971 CLEAR LENS**  
2.6mm high-impact Polycarbonate  
VLT 90%  
Model #: 740-0190



**INNERZONE 1 & 2 STRAP**  
Heat Resistance Nomex  
2-Piece Split Strap  
Model #: 740-0558



**INNERZONE 3 STRAP**  
Heat Resistance Nomex  
Full Strap  
Model #: 740-0590



**NOMEX® HEAT SLEEVE**  
Protective Heat Sleeve  
with Reflective ESS logo  
Model #: 740-0228



**SEMI-PERMANENT BRACKET**  
Thumb screws secure strap to  
helmet brim mounting brackets  
Model #: 740-0201



**SNAP ON/ OFF BRACKET**  
Strap ends snap on and off helmet  
brim mounting brackets  
Model #: 740-0251



# WILDLAND FIRE SERIES

[SHOP NOW >>](#)

## NFPA 1977 FIREFIGHTING GOGGLES

---



### PRODUCT DESCRIPTION

ESS offers three different Wildland goggle series. The new **ESS Influx FirePro-1977™** wildland goggles are Rx compatible, have low-profile frames and feature the patented **Adjustable Ventilation System™ AVS**, for a dust-free, fully-sealed mode, or a fog-free, open-ventilation mode. The **ESS Firepro 1977™** series is based on the ESS Profile NVG™ low profile military goggle and is Rx compatible. The **ESS Striketeam™** series is a high volume goggle that fits over prescription eyewear.

BUILT FOR BATTLE.™ TOUGH FOR LIFE.™







# WILDLAND FIRE SERIES

## NFPA 1977 FIREFIGHTING GOGGLES



### PROTECTION STANDARDS

NFPA 1977-2016 Edition • ANSI Z871-2015 • U.S. Federal OSHA • UL Certified

### LENSES

2.6mm -3mm High-Impact Polycarbonate • Interchangeable • 100% UVA/UVB Protection  
ESS ClearZone™ Anti-Fog/Anti-Scratch Lens Coating • Distortion-Free ESSOPTICS™



### PRESCRIPTION INSERTS AVAILABLE

The ESS Influx FirePro 1977 & FirePro 1977 Goggles are able to use prescription inserts.



### ESS STRIKER SERIES GOGGLES

ESS Striketeam & X-Tricatorl Goggles can accommodate fitting over most prescription eyewear.



## INFLUX FIREPRO-1977 WILDLAND GOGGLE KITS & CONFIGURATIONS



### INFLUX FIREPRO-1977 FS

Gray/Red Influx NFPA Compliant 1977 Frame  
With Full Strap and Two Velcro Tabs  
Model #: EE7018-24



### INFLUX FIREPRO-1977 EX

Gray/Red Influx NFPA Compliant 1977 Frame  
2-Piece Strap with Snap-On/Snap-Off Mounting Brackets  
Model #: EE7018-25

## INFLUX FIREPRO-1977 WILDLAND GOGGLE ACCESSORIES



### INFLUX CLEAR LENS

3mm high-impact Polycarbonate  
VLT 90%  
Model #: 101-289-002



### INFLUX FIREPRO-1977 FS STRAP

Heat Resisiance Nomex  
Full Strap  
Model #: 102-386-003



### NOMEX® HEAT SLEEVE

Protective Heat Sleeve  
with Reflective ESS logo  
Model #: 740-0228



### SNAP ON/ OFF BRACKET

Strap ends snap on and off helmet  
brim mounting brackets  
Model #: 740-0251





## FIREPRO-1977 - WILDLAND GOGGLE KITS & CONFIGURATIONS



### FIREPRO-1977 FS

Gray/Red Influx NFPA Compliant 1977 Frame  
With Full Strap and Two Velcro Tabs  
Model #: 740-0377



### FIREPRO-1977 EX

Gray/Red Influx NFPA Compliant 1977 Frame  
2-Piece Strap with Snap-On/Snap-Off Mounting Brackets  
Model #: 740-0378



### FIREPRO-1977 AF™

Gray/Red NFPA Compliant 1977 Asian Fit Frame  
With Full Strap and Two Velcro Tabs  
Model #: 740-0380

## FIREPRO-1977 - WILDLAND GOGGLE ACCESSORIES



**FIREPRO 1977 CLEAR LENS**  
2.6mm high-impact Polycarbonate  
VLT 90%  
Model #: 740-0562



**CLEAR - ASIAN FIT LENS**  
3mm high-impact Polycarbonate  
VLT 90%  
Model #: 740-0260



**FIREPRO 1977 EX STRAP**  
Heat Resistance Nomex  
2-Piece Split Strap  
Model #: 740-0216



**NOMEX® HEAT SLEEVE**  
Protective Heat Sleeve  
with Reflective ESS logo  
Model #: 740-0228



**SNAP ON/ OFF BRACKET**  
Strap ends snap on and off helmet  
brim mounting brackets  
Model #: 740-0251



**FIREPRO 1977 FS STRAP**  
Heat Resistance Nomex  
Full Strap  
Model #: 740-0215

## STRIKER WILDLAND GOGGLE KITS & CONFIGURATIONS



### STRIKETEAM XTO™

Gray Striker Frame  
With Full Strap and Closed-Cell Face Padding  
Model #: 740-0283



### STRIKETEAM WF™

Gray Striker Frame  
With Full Strap and No Face Padding  
Model #: 740-0236



### STRIKETEAM SJ™

Gray Striker Frame  
With Full Strap and Open-Cell Face Padding and Fully-Sealed Vents for Maximum Smoke Resistance  
Model #: 740-0235



### X-TRICATOR™

Gray/Red Striker Frame  
2-Piece Strap with Snap-On/Snap-Off Mounting Brackets  
Model #: 740-0287

## STRIKER - WILDLAND GOGGLE ACCESSORIES



**INNERZONE 1971 CLEAR LENS**  
2.6mm high-impact Polycarbonate  
VLT 90%  
Model #: 740-0190



**STRIKER TEAR-OFFS**  
Thin, optically-clear films  
Fits all Striker Goggles  
Model #: 740-0246



**STRIKER EX STRAP**  
Heat Resisance Nomex  
2-Piece Split Strap  
Model #: 740-0220



**NOMEX® HEAT SLEEVE**  
Protective Heat Sleeve  
with Reflective ESS logo  
Model #: 740-0228



**SNAP ON/ OFF BRACKET**  
Strap ends snap on and off helmet  
brim mounting brackets  
Model #: 740-0251



**STRIKER FS STRAP**  
Heat Resisance Nomex  
Full Strap  
Model #: 740-0221



# RX INSERTS

## CUSTOM PRESCRIPTION INSERTS FIT BEHIND PRIMARY EYE PRO LENSES



Many ESS products are compatible with Rx inserts which fit behind your eye pro's primary lenses. To identify Rx insert-compatible products, look for the **Rx Insert Available** symbol or reference the chart on the next page.

### U-RX INSERT



The U-Rx™ Prescription Lens Insert was developed to be the most comprehensive and adaptable Rx solution ever made. This universal Rx carrier is the first to interchange across brands in a wide variety of ESS and Oakley® ballistic eyeshields and goggles. The U-Rx is compatible with the Oakley® Ballistic M-Frame 2.0 / 3.0 and Oakley® SI Ballistic Goggle.

Model #: 740-0433



The **U-Rx Insert** is designed to be used seamlessly with **CrossSeries** Eyeshields, **Profile NVG** Goggle and **Influx** Goggle platforms.

### VICE RX INSERT



The wire & monofilament-framed Vice™ Rx Lens Insert snaps into a Crossbow®, Crosshair™, Suppressor™, ICE™, or ICE NARO™ eyeshield for a low-profile, lightweight prescription integration. This allows one prescription carrier to work in multiple products.

Model #: 740-0308



*If not using ESS Rx Filling Service, ESS strongly recommends the use of Polycarbonate lenses in prescription inserts. Rx filling should always be done in an ANSI-compliant lab. Range of prescription inserts may vary based on the filling service you use.*

# RX SUNGLASSES

## CUSTOM PRESCRIPTION SUNGLASSES



Several ESS Sunglasses can be fitted with custom Rx lenses. Choose from a wide variety of lens tints., from Clear to Smoke Gray. ESS 5B & Credence Offer fixed prescription lenses, while the ESS CDI and Rollbar offer interchangeable lenses.

### RX SUNGLASSES



#### ROLLBAR RX LENSES

Multiple Frame Colors Available  
Customizable Interchangeable Rx Lenses



#### CDI RX INSERT\*\*

Multiple Frame Colors Available  
Customizable Interchangeable Rx Lenses



#### CREDESCENCE RX LENSES

Black or Gray Frames Available  
Customizable Fixed Rx Lenses



#### 5B RX LENSES

Multiple Frame Colors Available  
Customizable Fixed Rx Lenses

**ESS RX FILLING SERVICE is available at [www.esseyepro.com/rx](http://www.esseyepro.com/rx)**

### ESS PRESCRIPTION EYEWEAR COMPATIBILITY MATRIX

Rx Compatibility		INFLUX GOGGLES Influx Influx Pivot AirBoss	PROFILE SERIES Profile nVG Profile TurboFan Profile Pivot Flight Pro	FIREPRO SERIES FirePro 1971 FirePro 1977 Influx FirePro-1977	EYESHIELDS Crossbow Suppressor Crosshair ICE & ICE NARO	CROSSBLADE CrossBlade CrossBlade NARO	CROSSBOW GASKET Crossbow Gasket	CDI SUNGLASS CDI	SUNGLASSES 5B Credence Rollbar
Model	Rx Range*								
U-Rx Rx Insert	+11/-11	■	■	■	■	■			
Vice Rx Insert	+6/-6				■				
Crossbow AF Rx	+6/-6				■				
CDI Rx Inserts	+5.5/-6							■	
Rx-Ready Sunglasses	(Varies)								■
U.S. Army UPLC		■	■	■	■	■	■		

\*Range of prescription may vary based on the filling service you use.

\*\*Use of Rx inserts renders the CDI sunglass non-compliant with MIL-PRF-32432A & ANSI Z87.1.



# ESS U.S. APEL NSN LIST



**AUTHORIZED  
PROTECTIVE  
EYEWEAR  
LIST (APEL)**

ALL PRODUCTS SHOWN BELOW ARE INCLUDED ON THE U.S. ARMY APEL



## ROLLBAR™ SPECTACLE - APEL UNIT ISSUE KIT

Black Frame w/ Clear & Smoke Gray Lenses & MOLLE Compatible Case

Model #: EE9018-01

U.S. NSN #: 4240-01-630-8249

## ROLLBAR™ SPECTACLES (UNIVERSAL FIT)

	MODEL#	U.S. APEL NSN #
Rollbar Replacement Lenses: Single-Pack Clear	740-0599	4240-01-632-5147
Rollbar Replacement Lenses: Single-Pack Smoke Gray	740-0600	4240-01-632-5164
Rollbar Replacement Lenses: 10-Pack Clear	101-286-002	4240-01-632-5867
Rollbar Replacement Lenses: 10-Pack Smoke Gray	101-286-001	4240-01-632-5874
Rollbar Replacement Frame: Black	600-915-002	4240-01-632-8150
Rollbar Replacement Case	200-236-001	4240-01-633-3547
Microfiber Sunglass Bag	740-0560	4240-01-633-3498



## CROSSBLADE™ EYESHIELD - APEL UNIT ISSUE KIT

Black Frame w/ Standard Clear & Smoke Gray lenses, Standard UPLC Nosepiece & MOLLE Compatible Case

Model #: EE9032-12

U.S. NSN #: 4240-01-678-7124

## CROSSBLADE™ SPECTACLES (MEDIUM/LARGE FIT)

CrossBlade Standard Replacement Lens: Single-Pack Clear	102-189-011	4240-01-679-3143
CrossBlade Standard Replacement Lenses: 10-Pack Clear	102-189-012	4240-01-679-3166
CrossBlade Standard Replacement Lens: Single-Pack Smoke Gray	102-189-013	4240-01-679-3348
CrossBlade Standard Replacement Lenses: 10-Pack Smoke Gray	102-189-014	4240-01-679-3179
CrossBlade Standard Replacement Nosepiece: Black	100-690-003	4240-01-679-3172
CrossBlade Standard UPLC-Compatible Nosepiece: Black	100-690-004	4240-01-679-3170
CrossBlade Replacement Frame: Black	102-333-003	4240-01-679-3168



## CROSSBLADE™ NARO EYESHIELD - APEL UNIT ISSUE KIT

Black Frame w/ NARO Clear & Smoke Gray lenses, NARO UPLC Nosepiece & MOLLE Compatible Case

Model #: EE9034-052

U.S. NSN #: 4240-01-678-7130

## CROSSBLADE™ NARO SPECTACLES (MEDIUM/SMALL FIT)

CrossBlade NARO Replacement Lens: Single-Pack Clear	102-190-011	4240-01-679-3177
CrossBlade NARO Replacement Lenses: 10-Pack Clear	102-190-012	4240-01-679-3339
CrossBlade NARO Replacement Lens: Single-Pack Smoke Gray	102-190-013	4240-01-679-3158
CrossBlade NARO Replacement Lenses: 10-Pack Smoke Gray	102-190-014	4240-01-679-3181
CrossBlade NARO Replacement Nosepiece: Black	100-690-005	4240-01-679-3340
CrossBlade NARO UPLC-Compatible Nosepiece: Black	100-690-006	4240-01-679-3186



## CROSSBLADE™ DELUXE EYESHIELD - APEL UNIT ISSUE KIT

Black CrossBlade Frame, Standard Clear & Smoke Gray lenses, NARO Clear & Smoke Gray lenses, UPLC Nosepiece & MOLLE Compatible Case

Model #: EE9032-10

U.S. NSN #: 240-01-678-6068

# ESS U.S. APEL NSN LIST



**AUTHORIZED  
PROTECTIVE  
EYEWEAR  
LIST (APEL)**

ALL PRODUCTS SHOWN BELOW ARE INCLUDED ON THE U.S. ARMY APEL



## CROSSBOW® EYESHIELD - APEL UNIT ISSUE KIT

Black Frame w/ Clear & Gray lenses, UPLC Nosepiece & MOLLE Compatible Case

**Model #:** 740-0607

**U.S. NSN #:** 4240-01-630-8327

## CROSSBOW® SPECTACLES (UNIVERSAL FIT)

	MODEL#	U.S. APEL NSN #
Crossbow Replacement Lens: Single-Pack Clear	740-0486	4240-01-587-7512
Crossbow Replacement Lens: Single-Pack Smoke Gray	740-0487	4240-01-587-7516
Crossbow Replacement Lenses: 10-Pack Clear	740-0421	4240-01-583-5748
Crossbow Replacement Lenses: 10-Pack Smoke Gray	740-0420	4240-01-583-5786
Crossbow Replacement Frame: Black	740-0446	4240-01-583-5973
Suppressor Thin-Stem Frame: Black	740-0561	4240-01-679-3323
Crossbow UPLC-Compatible Nosepiece	740-0596	4240-01-630-2574
Crossbow Standard Nosepiece: Black	740-0473	6640-01-623-2666
Crossbow MOLLE Compatible Replacement Case	740-0445	4240-01-583-5969
Replacement Elastic Retention Strap, Single	740-0565	4240-01-623-2660
Replacement Elastic Retention Strap, 25-pack	740-0254	4240-01-525-4777



## INFLUX™ GOGGLE - APEL UNIT ISSUE KIT

Tan 499 Goggle Frame w/ Clear & Gray Lenses, UPLC adapter, SpeedSleeve & Protective Soft Case

**Model #:** EE7018-04

**U.S. NSN #:** 4240-01-630-6343

## INFLUX™ SERIES GOGGLES (UNIVERSAL FIT)

Influx Series Replacement Lens: Single-Pack Clear	101-289-002	4240-01-632-5230
Influx Series Replacement Lens: Single-Pack Smoke Gray	101-289-001	4240-01-632-5237
Influx Series Replacement Lenses: 10-Pack Clear	101-290-002	4240-01-632-6923
Influx Series Replacement Lenses: 10-Pack Smoke Gray	101-290-001	4240-01-632-6927
Influx Goggle UPLC Rx Adapter	100-947-001	4240-01-633-4301
Influx Goggle Replacement Frame: Tan 499	101-301-001	4240-01-632-8181
Influx Goggle Replacement Strap: Tan 499	101-311-001	4240-01-633-4340
Influx Goggle Replacement SpeedSleeve : Tan 499	101-310-001	4240-01-633-3513
Goggle Replacement Bag Tan 499	101-312-001	4240-01-633-0955
Anti-fog solution, Single	101-314-001	4240-01-633-0950
ClearZone Anti-Fog Wipes: 25-Pack	740-0209	4240-01-525-5107

## ESS - U.S. MILITARY REGIONAL DIRECTORS



COL (R) Jack Carpenter

ESS National Guard & Reserve Director

jack@esseyepro.com

CSM (R) Brunk Conley

ESS National Guard & Reserve Director

mt@esseyepro.com

CSM (R) Bernie Knight

ESS Eastern Regional Military Director

bknight@esseyepro.com

CSM (R)Clif Burgoyne

ESS Western Regional Military Director

cburgoyne@esseyepro.com

ESS PRODUCTS  
ARE AVAILABLE AT:





# ESS U.S./NATO NSN LIST



## CROSSBOW® SPECTACLES (UNIVERSAL FIT)

	MODEL #	NSN #
● Crossbow 2LS: Clear, Smoke Gray Lenses & Case	740-0390	4240-01-583-9497
● Crossbow 3LS: Clear, Smoke Gray, Hi-Def Yellow Lenses & Case	740-0387	8465-01-583-9799
● Crossbow Replacement Lenses: 10-Pack Clear	740-0421	4240-01-583-5748
● Crossbow Replacement Lenses: 10-Pack Smoke Gray	740-0420	4240-01-583-5786
● Crossbow Replacement Lens: Single-Pack Hi-Def Yellow	740-0423	4240-01-610-5884
● Crossbow Replacement Lens: Single-Pack Hi-Def Bronze	740-0509	4240-01-610-5886
● Crossbow Rigid MOLLE Replacement Case: Black	740-0445	4240-01-583-5969
● Crossbow Replacement Frame: Black	740-0446	4240-01-583-5973

## SUPPRESSOR™ SPECTACLES

	MODEL #	NSN #
● Crossbow Suppressor 2X: 1 Suppressor, 1 Crossbow & Case	740-0451	4240-01-594-0564

## CROSSHAIR™ SPECTACLES (UNIVERSAL FIT)

	MODEL #	NSN #
● Crosshair Unit Issue Kit: w/ Clear, Smoke Gray lenses, & Case	EE9014-11	4240-01-630-6352
● Crosshair 2LS: Black w/ Clear, Smoke Gray Lenses & Case	EE9014-04	6930-01-594-0575
● Crosshair 3LS: Black w/ Clear, Smoke Gray, Hi-Def Yellow Lenses & Case	EE9014-05	6930-01-594-0570
● Crosshair Replacement Lens: Single-Pack Clear	740-0479	4240-01-632-5140
● Crosshair Replacement Lenses: 10-Pack Clear	740-0482	4240-01-632-5857
● Crosshair Replacement Lens: Single-Pack Smoke Gray	740-0480	4240-01-632-5144
● Crosshair Replacement Lenses: 10-Pack Smoke Gray	740-0483	4240-01-632-5864
● Crosshair Replacement Frame: Black	600-791-002	4240-01-632-5130
● Crosshair Replacement Nosepiece	101-307-001	4240-01-633-4210
● Crosshair MOLLE Replacement Case	101-295-001	4240-01-633-3562

## ESS BALLISTIC SUNGLASSES

● CDI Sunglasses: Clear, Smoke Gray Lenses & Case: Black	740-0296	4240-01-545-7925
● CDI MAX Sunglasses: Clear, Smoke Gray Lenses & Case: Black	740-0297	8465-01-583-9788

## ICE™ SPECTACLES (REGULAR SIZE)

	MODEL #	NSN #
● ICE-2X: 2 Frames w/ Clear, Smoke Gray Lenses & Case	740-0004	4240-01-554-5699
● ICE-2LS: Clear, Smoke Gray Lenses & Case	740-0015	4240-01-573-1934
● ICE-2: Clear, Smoke Gray Lenses & Case	740-0010	4240-01-525-5085
● ICE-3LS: Clear, Smoke Gray, Hi-Def Yellow Lenses & Case	740-0019	4240-01-545-7922
● ICE Replacement Lenses: 50-Pack Clear	740-0072	4240-01-525-4819
● ICE Replacement Lenses: 50-Pack Smoke Gray	740-0087	4240-01-525-5098
● ICE Replacement Frame & Nosepiece Kit: Black	740-0082	4240-01-525-5095

## ICE™ NARO SPECTACLES (SMALL SIZE)

	MODEL #	NSN #
● ICE-2X NARO: 2 Frames w/ Clear, Smoke Gray Lenses & Case	740-0002	4240-01-554-5696
● ICE-2 NARO: Clear, Smoke Gray Lenses & Case	740-0008	4240-01-537-6143
● ICE-3LS NARO: Clear, Smoke Gray, Hi-Def Yellow Lenses & Case	740-0017	4240-01-545-7923
● ICE NARO Replacement Lenses: 50-Pack Clear	740-0075	4240-01-549-0863
● ICE NARO Replacement Lenses: 50-Pack Smoke Gray	740-0076	4240-01-549-0876
● Replacement Semi-Rigid Case (For ICE Series): Black	740-0081	4240-01-518-9838
● ICE NARO Replacement Frame & Nosepiece Kit: Black	740-0083	4240-01-549-0934

● This symbol indicates products available for U.S. and foreign procurement.

● This symbol indicates products available available on NSPA NLSE.

# ESS U.S./NATO NSN LIST



## PROFILE™ SERIES GOGGLES (UNIVERSAL FIT)

	MODEL #	NSN #
🇺🇸 Profile NVG Goggle w/ UPLC adapter, SpeedSleeve & Case: Tan 499	740-0609	4240-01-630-7259
🇺🇸 Profile NVG Goggle w/ MultiCam SpeedSleeve : OCP	740-0496	4240-01-604-2788
🇺🇸 Profile NVG Goggle w/ SpeedSleeve & Case: Foliage Green	740-0129	4240-01-540-5585
🇺🇸 Profile NVG Goggle w/ SpeedSleeve & Case: Black	740-0124	4240-01-504-6222
🇺🇸 Flight Pro Goggle: Gray	740-0410	1680-01-602-5906
🇺🇸 Profile NVG Replacement Lens: Single-Pack Clear	740-0113	4240-01-587-8420
🇺🇸 Profile NVG Replacement Lens: Single-Pack Smoke Gray	740-0119	4240-01-587-7640
🇺🇸 Profile NVG Replacement Lens: 10-Pack Clear	101-288-002	4240-01-632-6907
🇺🇸 Profile NVG Replacement Lens: 10-Pack Smoke Gray	101-288-001	4240-01-632-6914
🇺🇸 Profile NVG Replacement Frame w/ MultiCam SpeedSleeve: OCP	740-0534	4240-01-604-2791
🇺🇸 Profile NVG Replacement Frame: Tan 499	600-520-002	4240-01-641-7798
🇺🇸 Profile NVG Replacement Frame: Foliage Green	740-0464	4240-01-587-7565
🇺🇸 Profile NVG Replacement Frame: Black	740-0465	4240-01-587-7520
🇺🇸 Profile NVG Tan 499 Replacement Strap	101-308-001	4240-01-633-4339
🇺🇸 Profile NVG Tan 499 Replacement AR Sleeve	101-309-001	4240-01-633-3504
🇺🇸 Profile NVG w/ SpeedSleeve & Case: Foliage Green	740-0401	4240-01-573-1926
🇺🇸 Profile NVG w/ SpeedSleeve & Case: Black	740-0404	4240-01-573-1936
🇺🇸 Profile NVG w/ SpeedSleeve & Case: Black w/ 3 Lenses	740-0397	8465-01-576-7741
🇺🇸 Asian-Fit Profile NVG w/ SpeedSleeve & Case: Black	740-0123	8465-01-588-5803
🇺🇸 Profile TurboFan Goggle w/ SpeedSleeve & Case: Black	740-0131	4240-01-546-0323
🇺🇸 Profile Series Replacement Lenses: 50-Pack Clear	740-0114	4240-01-504-5641
🇺🇸 Profile Series Replacement Lenses: 50-Pack Smoke Gray	740-0120	4240-01-504-6143

## STRIKER™ SERIES GOGGLES (UNIVERSAL FIT)

	MODEL #	NSN #
🇺🇸 Land Ops Goggle w/ SpeedSleeve & Case: Tan 499	740-0206	4240-01-540-5580
🇺🇸 Land Ops Goggle w/ SpeedSleeve & Case: Foliage Green	740-0202	4240-01-540-5576
🇺🇸 Vehicle Ops Goggle w/ SpeedSleeve & Case: Black	740-0248	4240-01-525-5101
🇺🇸 Flight Deck Goggle: Gray	740-0197	4240-01-492-5720
🇺🇸 Land Ops Replacement Lens: Single-Pack Clear	740-0192	4240-01-632-5238
🇺🇸 Land Ops Replacement Lens: Single-Pack Smoke Gray	740-0227	4240-01-632-5240
🇺🇸 Land Ops Replacement Lens: 10-Pack Clear	101-287-002	4240-01-632-6934
🇺🇸 Land Ops Replacement Lens: 10-Pack Smoke Gray	101-287-001	4240-01-632-6936
🇺🇸 Striker Series Replacement Lens: 50-Pack Smoke Gray	740-0226	4240-01-492-5725
🇺🇸 Striker Series Replacement Lens: 50-Pack Clear	740-0191	4240-01-492-5722
🇺🇸 Land Ops Replacement Frame w/ Speed Sleeve Tan 499	740-0467	4240-01-633-3347
🇺🇸 Land Ops Goggle w/ SpeedSleeve & Case: Foliage Green	740-0402	4240-01-573-1930
🇺🇸 Vehicle Ops Goggle w/ SpeedSleeve & Case: Black	740-0403	4240-01-573-1931

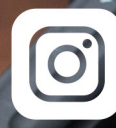
## RX INSERTS & OTHER ACCESSORIES

	MODEL #	NSN #
🇺🇸 U-Rx Insert (For Profile, Crossbow, ICE & ICE NARO): Nylon Frame	740-0411	6540-01-584-0170
🇺🇸 U-Rx Insert (For Profile, Crossbow, ICE & ICE NARO): 25-Pack	740-0444	6540-01-584-0176
🇺🇸 P-2B Rx Insert (For Profile, Crossbow, ICE & ICE NARO): Nylon Frame	740-0310	6540-01-525-4784
🇺🇸 Vice Rx Insert (For Advancer, Cross-Series & ICE Series): Wire Frame	740-0308	6540-01-545-7927
🇺🇸 Replacement Elastic Straps (For Cross-Series, ICE Series): 25-Pack	740-0254	4240-01-525-4777
🇺🇸 Replacement Semi-Rigid Case (For ICE & ICE NARO): Black	740-0081	4240-01-518-9838
🇺🇸 ClearZone Anti-Fog Wipes: 25-Pack	740-0209	4240-01-525-5107

🇺🇸 This symbol indicates products available for U.S. and foreign procurement.

🇺🇸 This symbol indicates products available available on NSPA NLSE.





@esseyepro.com