

HI VIZ[®]

SHOOTING SYSTEMS

CELEBRATING

25

ILLUMINATING YEARS



SEE WHAT YOU'VE BEEN MISSING

WWW.HIVIZSIGHTS.COM

CATALOG

2021

▲ 25 Years of HIVIZ [®]	3
▲ HIVIZ Technology	6
● Handguns	6
● LiteWave H3 [®] Technology	
● LiteWave [®] Technology	
● Overmolded Sights	
● Original Sights	
● Shotguns	7
● Magni-Optics [®] Technology	
● Magnetic Sights	
● Plain Barrel Sights	
● Screw Attach Sights	
● Rifles	7
● Adjustable Sights	
▲ Handgun Sights	8
● Products by Manufacturer	9-26
▲ Shotgun Sights	27
● Magnetic Sights	28-29
● Plain Barrel Sights	30
● Screw Attach Sights	31-33
● Turkey/Deer Sight Sets	34-35
▲ Rifle Sights	36
● Henry	37
● Ruger	37
● Universal	38
● Tactical	39
▲ Accessories	40
● Recoil Pads	41
● LitePipe Kits	42
● Sight Tool	42
▲ Product Selection Charts	43
● Shotgun Sight Selection	43-46
▲ HIVIZ [®] Pro Staff	47



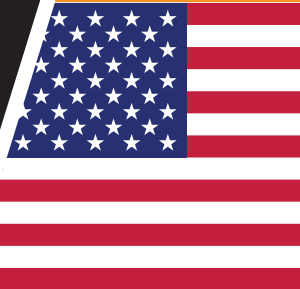
The HIVIZ
LiteWave H3[®]
CompSight[®], for
details see pg. 31.

Innovation & Performance Are What We Do

HIVIZ® began in 1996 with a single product. Our goal was simple, to advance the art of shooting. For 25 years HIVIZ has worked toward this goal by continuing to offer high quality and innovative products for shotguns, handguns, and rifles. From our unique molded LitePipes to our patented LiteWave H3® tritium/fiber-optic sights, HIVIZ continues to be a leader in the shooting world. Our goal is to provide you, our valued and loyal customers, with the best sights available to increase your success and enjoyment of the shooting sports.

We are proud to be installed as original equipment on many major brands including Ruger, Smith & Wesson, Benelli, Browning, Henry Repeating Arms and Remington.

Proudly Made in the USA



HIVIZ Shooting Systems Headquarters, Laramie, WY



1996

Development of the M-Series Magnetic Sight, HIVIZ® is founded by Phil Howe

1997

HIVIZ® adds Browning as its first OEM partner with Smith & Wesson following the same year

1998

HIVIZ® wins Shooting Industry Academy of Excellence Accessory of the Year Award for the HIVIZ® Shotgun Sight

2002

HIVIZ® introduces innovative new turkey/deer shotgun sight: TriViz®

2002

HIVIZ® receives Shooting Industry Academy of Excellence Accessory of the Year Award for the TriViz® Shotgun Sight

HIVIZ® expands product line to include Recoil Pads

2003

HIVIZ® develops the Magni-Optics® Technology, the first of its kind, for cross-eye dominant shooters

2006

HIVIZ® adds AR Post to rifle sight line

2008

HIVIZ® adds AK Post sight to line

2010

CELEBRATING

25

ILLUMINATING YEARS

2014

HIVIZ® introduces LiteWave® Sights

2015

HIVIZ® moves from Ft. Collins, CO to Laramie, WY

2015

HIVIZ® bridges new ground with introduction of first Tritium Sights

2016

HIVIZ® introduces LiteWave® for CompSight®

2017

HIVIZ® breaks ground for manufacturing expansion

HIVIZ® expands into new building

2018

HIVIZ® purchased by Rogers Group

2018

HIVIZ® introduces the LiteWave H3® Technology combining Tritium with its unique LitePipe Technology for 24-hour illumination for handguns

2018

HIVIZ® combines its world renowned CompSight® shotgun sight with the LiteWave H3® Technology for shotgunners

2020

HIVIZ® TECHNOLOGY

Engineered for Brightness. Designed for Ruggedness.

LITEWAVE® TECHNOLOGY



Look for the
LITEWAVE icon

HIVIZ® LITEWAVE® SIGHTS were designed to take the firearm sight to the next level. This innovative design features an integral LitePipe lock while the exoskeleton design adds to the durability of the LiteWave design. This results in an incredibly bright sight picture in a variety of shooting conditions. All LiteWave sights are holster friendly and ready for rigorous use on the range or in the field.

HIVIZ® LITEWAVE H3® SIGHTS family of products combines tritium with our very own legendary LitePipe technology for 24-hour illumination to bring you true day and night performance. The all-steel sight sets are rugged and dependable, designed for the roughest use, whether it is personal defense and protection, Law Enforcement or Military.

LITEWAVE® TECHNOLOGY

H3®



Look for
the H3 icon

The LiteWave H3 line ensures fast sight acquisition and bright sight picture day or night. The patented LiteWave H3 carries a 12-year tritium warranty for loss of illumination. Available for many popular handgun models the LiteWave H3 sights duplicate factory sight heights, this ensures LiteWave H3 sights will fit the same holsters and accessories as the factory sights.

HIVIZ LiteWave H3 CompSights® are also available for shotguns in screw attach and plain barrel options. See pgs. 31 and 32 for more info.

LITEPIPE TECHNOLOGY

No other sight company offers the simple interchangeability of LitePipes that HIVIZ® does. Our unique molded LitePipes allow you to remove, replace and reuse the LitePipe. This offers shooters of all disciplines the opportunity to "customize" their sight picture, any place, at any time.

LitePipe combinations offer quick and easy target acquisition in any light condition. LiteWave handgun front sights come with White, Red and Green pipes while rear sights come with two Black, two red and two Green pipes. Stock up on every color and size to customize your sight picture.



OVERMOLDED SIGHTS

The LitePipes in our Overmolded sights are locked in place with a clear resin that is injection molded around the LitePipe, giving this design unsurpassed durability.



ORIGINAL SIGHTS

Durable sights with interchangeable LitePipes in a variety of color options for an easily-customized sight picture.

M

Look for these icons when choosing a technology that is best for you

FOR SHOTGUNS

MAGNI-OPTICS® TECHNOLOGY

Conquer Cross-Eye Dominance & the Field

Does cross-eye dominance have you missing shots? Our patented Magni-Optics® Technology is just what you need to stay on target shot after shot. No other shotgun sight on the market combines a LitePipe with a unique magnifying chamber and lens to correct cross-eye dominance issues. This proprietary design improves the performance of cross-eye dominant shooters by encouraging both-eyes-open shooting.

The use of magnification ensures that the lighted sight picture is only visible when the shooter uses the correct sighting eye combined with the proper head and shooting position. Just as if you were looking through a rifle scope, only the shooting eye can see through the scope, only your shooting eye will see the LitePipe.

magniOptics®

Cross-eye dominance is an issue that affects more than 40% of all shooters. Magni-Optics allows cross-eye dominant shooters to shoot with both eyes open using their non-dominant eye. See pgs. 28 and 32 for product information.



If you are sighting with the wrong eye the sight will not appear lit.



If you are sighting with the proper eye, you will see the fully lit sight.



MAGNETIC SIGHTS

We set the standard for magnetic sights! Easy to attach with strong, rare earth magnets for a solid sight picture, giving you options with interchangeable LitePipes.



PLAIN BARREL SIGHTS

These sights are designed specifically for shotguns without ribs. The simple snap-on design offers interchangeable LitePipes in an easy-to-attach design for any plain-barrel shotgun.



SCREW ATTACH SIGHTS

Screw attach sights offer the most worry free and secure mounting option. Available in a variety of styles and colors.



FOR RIFLES

ADJUSTABLE SIGHTS

HIVIZ® offers LiteWave® front sights combined with adjustable rear sights for Henry Rifles and the popular Ruger 10/22 (pg. 37). Also, check out our Universal Rear Sight (pg. 38) to bring your shooting to the next level.



Fig. 1



Shooting Tip # 29:

Draw From the Holster by Jerry Miculek

When drawing from a holster, there are 3 steps to remember. Position 1 is going from hands relaxed at sides to placing the strong hand onto the handgun, establishing a good high master grip and bringing the support hand tight against the stomach in preparation of establishing grip in position 2. Position 2 is drawing the gun up and out from the holster, maintaining a good grip and keeping the strong hand finger along the slide for safety. Next you present it in front of you, muzzle pointing down range with the support hand meeting the firearm to establish a good grip on the handgun. Position 3 would be to find the front sight in your peripheral vision and push the gun forward and up until it reaches your line of sight and you have the sights aligned with the target. This is the final step and where you would begin taking up the slack on the trigger for a good trigger press as soon as your sights are aligned on your target. Practice positions 1-3 until you can properly and smoothly draw the firearm and acquire the sights quicker.



Fig. 2



Fig. 3

HANDGUN SIGHTS

SEE WHAT YOU'VE BEEN MISSING

CZ

LiteWave H3® CZ Sight Set

- LiteWave H3 Sight Set
- Steel construction
- 24-hour illumination
- Brightest, fully-encapsulated Tritium
- Fits CZ 75, 85 and P-01 with fixed sights
- LitePipes: available in Green or Orange

CZN321 (R) ● (F) ○

CZN421 (R) ● (F) ○

MSRP: \$135.00**CZ 75, 83, 85, 97, P-01 LiteWave® Sight**

- LiteWave® Front Sight
- Fits CZ 75, 83, 85, 97 and P-01 pistols; does not fit Kadet, Champion and IPSC models
- Interchangeable LitePipes: ● ● ○

CZLW01

MSRP: \$34.95**CZ 75, 85 & P-01 Rear Sight**

- LiteWave® Rear Sight
- Fits CZ 75, 85 and P-01 pistols with fixed rear sights
- Interchangeable LitePipes: ● ● ●

CZLW11

MSRP: \$55.95

COLT

Colt 1911

- Front Sight
- Fits most wide tenon 1911s
- Interchangeable LitePipes: ● ● ○

CT2009

MSRP: \$39.20

FN

FNS & FNX Models

- Front Sight
- Steel construction
- Does not fit FNP models
- Interchangeable LitePipes: ● ● ○

FX-9 (Fits FNS-9 & FNX-9 blade height .213-in.)**FX-40** (Fits FNS-40 & FNX-40 blade height .198-in.)**FX-45** (Fits FNS-45 & FNX-45 blade height .181-in.)**MSRP: \$39.20**

LiteWave H3[®] for Glock



- LiteWave H3[®] Sight Set
- Steel construction
- Brightest, fully-encapsulated Tritium
- 24-hour illumination
- LitePipes: available in Green or Orange

- Fits Glock models 42 and 43, 43X and 48

GLN321 (R) ● (F) ●

GLN421 (R) ● (F) ●

GLN521 (R) ● (F) ●

GLN621 (R) ● (F) ●

- Fits Glock generations chambered 9mm, .40 S&W and .357 SIG; does not fit models 42, 43, 43X, 44 and 48

GLN325 (R) ● (F) ●

GLN425 (R) ● (F) ●

GLN525 (R) ● (F) ●

GLN625 (R) ● (F) ●



- Fits all generation Glock models chambered in .45 ACP, 10mm and 45 GAP

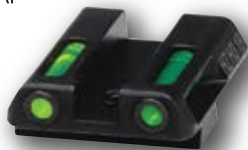
GLN329 (R) ● (F) ●

GLN429 (R) ● (F) ●

GLN529 (R) ● (F) ●

GLN629 (R) ● (F) ●

MSRP: \$135.00



LiteWave H3[®] Express for Glock



- LiteWave H3[®] Express Sight Set
- Steel construction
- Brightest, fully-encapsulated Tritium
- 24-hour illumination
- LitePipes: available in Green or Orange

- Fits all generation Glock models chambered in 9mm, .40 S&W and .357 SIG; does not fit models 42, 43, 43X, 44 and 48

GLXN325 (R) ● (F) ●

GLXN425 (R) ● (F) ●

- Fits all generation Glock models chambered in .45 ACP, 10mm and .45 GAP

GLXN329 (R) ● (F) ●

GLXN429 (R) ● (F) ●

MSRP: \$135.00



Glock .315 Front Sight

- Front Sight (0.315 tall)
- Designed to be matched with HIVIZ® Adjustable Glock Rear Sight (GLAD211)
- Fits all Glock Gen 1, 2, 3 and 4 models except 42, 43, 43X, 44 and 48
- Interchangeable LitePipes: ● ● ○

GLAD201

MSRP: \$41.95



Glock Adjustable Rear Sight

- Rear Sight
- Designed to be matched with HIVIZ® Glock .315 Front Sight (GLAD201)
- Click adjustable windage and elevation
- All steel competition grade
- Fits all Glock Gen 1, 2, 3 and 4 models except 42, 43, 43X, 44, 48 and MOS
- Interchangeable LitePipes: ● ● ●

GLAD211

MSRP: \$85.00



Glock – All Models

- LiteWave® Front Sight
- Fits all Generations of Glock pistols
- Interchangeable LitePipes: ● ● ○

GL2014

MSRP: \$34.95



Glock – All Models

- Tactical Overmolded Front Sight
- Larger .120-in. diameter LitePipe blade height 0.180
- Fits all Glock pistols
- LitePipes: available in Green or Red

GL2009-G ●

GL2009-R ●

MSRP: \$45.40



See pg. 42 for HIVIZ Sight Installation Tool for Glock Sights.

GLOCK**Glock 9mm, 40 S&W, .357 SIG**

- Target Sight Set for 34/35
- Front Sight Size: .215-in. tall x .120-in. wide
- Rear Sight Size: .224-in. tall; Notch is .140-in. wide x .125-in. deep
- Fits all Glock models except models 42, 43, 43X, 44 and 48
- Front Interchangeable LitePipes: ●●○
- Rear Interchangeable LitePipes: ●●●

GLT178**MSRP: \$85.95****Glock 9mm, 40 S&W, .357 SIG, 45 & 10mm**

- LiteWave® Rear Sight
- GLLW15: Fits Glock models chambered in 9mm, 40 S&W and .357 SIG; does not fit models 42, 43, 43X, 44 and 48; Blade height is 6.5mm
- GLLW19: Fits models chambered in 45 ACP, 45 GAP and 10mm; Blade height is 6.9mm
- Interchangeable LitePipes: ●●●

**GLLW15****GLLW19****MSRP: \$55.95****Glock 42, 43**

- LiteWave® Rear Sight
- Sight Height: 6.1mm
- Fits Glock models 42, 43 43X and 48
- Interchangeable LitePipes: ●●●

**GLLW11****MSRP: \$55.95**

LiteWave H3® for HK



- LiteWave H3® Sight Set
- Steel construction
- Brightest, fully-encapsulated Tritium
- 24-hour illumination
- Fits HK VP9, VP9SK, VP40, HK45, P30 and P30L; does not fit VP9 made after 6/20
- LitePipes: available in Green or Orange

HKN321 (R) ● (F) ●

HKN421 (R) ● (F) ●

HKN521 (R) ● (F) ●

HKN621 (R) ● (F) ●

MSRP: \$135.00



HK45, P30, VP9, VP40



- LiteWave® Rear Sight
- Fits models HK45, HK45C, P30, P30L, VP9 and VP40 pistols; does not fit VP9 made after 6/20
- Interchangeable LitePipes: ● ● ●

HKLW11

MSRP: \$55.95



HK45, P30, P2000, VP9, VP40



- LiteWave® Front Sight
- Fits models HK45, HK45C, P30, P30L, P2000, P2000 SK, VP9 & VP40
- Interchangeable LitePipes: ● ● ○

HKLW01

MSRP: \$41.95



KIMBER

LiteWave H3[®]
for Kimber 1911

NEW

H3

- LiteWave H3[®] Sight Set
- Steel construction
- Brightest, fully-encapsulated Tritium
- 24-hour illumination
- Fits 1911 models with fixed rear sight; does not fit Micro or Solo
- LitePipes: available in Green or Orange

KBN321 (R) ● (F) ●

KBN421 (R) ● (F) ●

KBN521 (R) ● (F) ●

KBN621 (R) ● (F) ●

MSRP: \$135.00



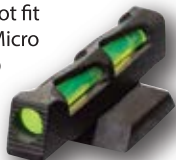
Kimber 1911



- LiteWave[®] Front Sight
- Fits 1911 models with .330-in. x .075-in. x 60 deg. dovetail; does not fit Kimber .22-caliber conversion or Micro
- Interchangeable LitePipes: ● ● ○

KB2015

MSRP: \$41.95



Kimber 1911



- LiteWave[®] Rear Sight
- Fits 1911 models with fixed rear sight except Micro and Solo
- Interchangeable LitePipes: ● ● ●

KBLW11

MSRP: \$55.95



NOVAK

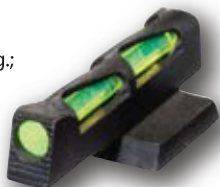
Novak-Style Sight



- LiteWave[®] Front Sight
- Fits Novak-style dovetail: .330-in. x .075-in. x 65 deg.; blade height is .180-in.
- Interchangeable LitePipes: ● ● ○

NVLW01

MSRP: \$41.95



RUGER

LiteWave H3® for Ruger GP100



- LiteWave H3® Front Sight
- Steel construction
- Brightest, fully-encapsulated Tritium
- 24-hour illumination
- Fits Ruger GP100 with spring plunger retained front sight
- LitePipes: available in Green

GPN301 ●

MSRP: \$55.00



Ruger Revolver Rear Sight



- Fully adjustable Rear Sight
- All-steel construction with click adjustment for windage and elevation
- Fits all Ruger revolvers with factory adjustable rear sights except SP101 and LCRx
- Interchangeable LitePipes: ● ● ●

RGRAD211

MSRP: \$60.00



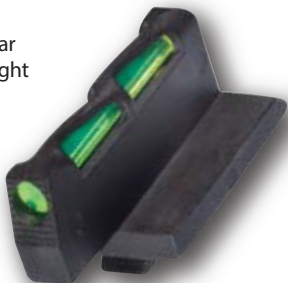
GP100



- LiteWave® Front Sight
- Fits all GP100 revolvers with adjustable rear sight and spring plunger retained front sight
- Interchangeable LitePipes: ● ● ●

GPLW01

MSRP: \$34.95





Redhawk



- LiteWave® Front Sight
- Fits Redhawk and Super Redhawk revolvers with spring plunger retained front sight; also fits Super Blackhawk Hunter revolvers
- Interchangeable LitePipes: ● ● ○

RHLW01

MSRP: \$41.95



LCR

- Overmolded Front Sight
- Fits LCR and LCR-X models chambered in .38 and .357
- LitePipes: available in Green, Orange or Red

LCR2010-G ●

LCR2010-O ●

LCR2010-R ●

MSRP: \$45.40



Super Blackhawk



- LiteWave® Front Sight
- Fits stainless steel Super Blackhawk, Blackhawk and Bisley revolvers with pinned front sight; does not fit .45 Colt models
- Interchangeable LitePipes: ● ● ○

RBLW01

MSRP: \$41.95



Super Redhawk Alaskan

- Overmolded Front Sight
- Fits Super Redhawk Alaskan revolvers
- LitePipes: available in Green or Red

RA2011-G ●

RA2011-R ●

MSRP: \$45.40



"P" Series, SP101



- LiteWave® Front Sight
- Fits All "P" Series pistols; does not fit the P-345. Also fits the SP101, except in .327 Fed.
- Interchangeable LitePipes: ● ● ○

RGPLW01

MSRP: \$41.95



RUGER

MK II, III & IV



- Rear Sight
- Fully adjustable for windage and elevation
- All steel construction
- Fits all MK I, II, III and IV models with adjustable rear sight, including 22/45 and 22/45 LITE models
- Interchangeable LitePipes: ● ● ●

MKAD211

MSRP: \$85.00



MK I, II, III, IV & Browning Buck Mark



- LiteWave® Front Sight
- Fits Ruger Mark I, II, III and IV steel bull barrel pistols; 22/45 with adjustable rear sight (does not fit 22/45 Lite); Single-Six revolvers with adjustable rear sights; Browning Buck Mark pistols with bull barrel except the Challenge, 5.5 Target and 5.5 Field
- Interchangeable LitePipes: ● ● ○

HRBLW01

MSRP: \$34.95



22/45 Lite



- LiteWave® Front Sight
- Fits 22/45 Lite pistols with adjustable rear sight
- Interchangeable LitePipes: ● ● ○

RG2245LLW01

MSRP: \$34.95



SR9, SR40, SR45



- LiteWave® Front Sight
- Fits SR9, SR9C, SR40, SR40C and SR45 pistols
- Interchangeable LitePipes: ● ● ○

SRLW01

MSRP: \$41.95



SR22



- LiteWave® Front Sight
- Fits SR22 models with adjustable rear sight
- Interchangeable LitePipes: ● ● ○

SR22

MSRP: \$41.95



MK II & III

- Front Sight
- Fits Ruger MK II and III tapered barrel target model with 6-in. and 6-7/8-in. barrel with adjustable rear sight
- Interchangeable LitePipes: ● ● ○

RT2008

MSRP: \$39.20



RUGER

LC9, LC380

- LiteWave® Front Sight
- Fits LC9 and LC380 pistols
- Interchangeable LitePipes: ● ● ○

LCLW01

MSRP: \$34.95



LC9, LC380

- LiteWave® Rear Sight
- Fits LC9 and LC380 pistols
- Interchangeable LitePipes: ● ● ●

LCLW11

MSRP: \$55.95

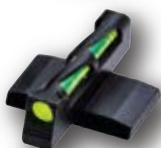


American Pistols

- LiteWave® Front Sight
- Fits full sized and compact models
- Interchangeable LitePipes: ● ● ○

RGALW01

MSRP: \$41.95



American Pistols

- LiteWave® Rear Sight
- Fits full sized and compact models
- Interchangeable LitePipes: ● ● ●

RGALW11

MSRP: \$55.95



LiteWave® Sight Set for Ruger Security 9

- LiteWave® Sight Set
- Fits Ruger Security 9 pistols
- Front Interchangeable LitePipes: ● ● ○
- Rear Interchangeable LitePipes: ● ● ●

RGS9LW21

MSRP: \$85.95



Tritium NiteSight for Ruger Security 9

- Tritium Sight Set
- Features ultra-durable, laser-sealed tactical tritium lamp
- A white halo helps aid in ultra-fast sight acquisition
- Visible in all lighting conditions
- Fits Ruger Security 9 pistols
- LitePipes: ● ○

RGS9N121

MSRP: \$141.95



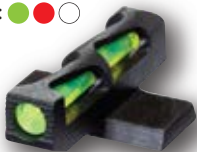
P-Series



- LiteWave® Front Sight
- Sight Height: Same as SIG #6
- Fits P-Series pistols with machined slides; does not fit the P-250
- Interchangeable LitePipes: ● ● ○

SGLW06

MSRP: \$41.95



P-Series



- LiteWave® Front Sight
- Sight Height: Same as SIG #8
- Fits P-Series pistols with machined slides; does not fit the P-250
- Interchangeable LitePipes: ● ● ○

SGLW08

MSRP: \$41.95



P-Series



- LiteWave® Rear Sight
- Fits all P-Series pistols with fixed rear sight height #8 does not fit the P-320, P-365 and P-250
- Interchangeable LitePipes: ● ● ●

SGLW18

MSRP: \$55.95



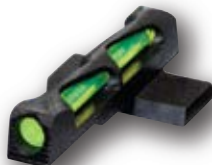
P-Series



- LiteWave® Front Sight
- Sight Height: Same as SIG #6
- Fits P-Series pistols with stamped steel slides; does not fit the P-250
- Interchangeable LitePipes: ● ● ○

SG2015

MSRP: \$41.95



SIGSAUER P226



LiteWave H3® Pinned Front Sight for S&W

- LiteWave H3® Sight Set
- Steel construction
- Brightest, fully-encapsulated Tritium
- 24-hour illumination
- Fits 2.5-in. or longer barrel revolvers with pinned front sight and adjustable rear sight

• LitePipe: ●

SWN1002

MSRP: \$55.00



LiteWave H3® for S&W

- LiteWave H3® Sight Set
- Steel construction
- Brightest, fully-encapsulated Tritium
- 24-hour illumination
- LitePipes: available in Green or Orange

- Fits Shield models in 9mm, .40 S&W, and .45 calibers

MPSN321 (R) ● (F) ●

MPSN421 (R) ● (F) ●

MPSN521 (R) ● (F) ●

MPSN621 (R) ● (F) ●

- Fits models EZN380

EZN321 (R) ● (F) ●

EZN421 (R) ● (F) ●

- Fits models 9EZ

9EZN321 (R) ● (F) ●

9EZN421 (R) ● (F) ●

- Fits M&P full sized and compact in all calibers; does not fit CORE, M&P 22 or M&P long slide models

MPN321 (R) ● (F) ●

MPN421 (R) ● (F) ●

MPN521 (R) ● (F) ●

MPN621 (R) ● (F) ●

MSRP: \$135.00



SMITH & WESSON

LiteWave H3® for S&W "DX" Revolvers



- LiteWave H3® Front Sight
- Steel construction
- Brightest, fully-encapsulated Tritium
- 24-hour illumination
- Fits S&W Revolvers with the "DX" type interchangeable front sight
- LitePipe:

SWN3001 (Sight Height: .250-in.)

SWN3002 (Sight Height: .208-in.)

SWN3003 (Sight Height: .310-in.)

MSRP: \$55.00



LiteWave H3® Express for S&W



- LiteWave H3® Express Sight Set
- Steel construction
- Brightest, fully-encapsulated Tritium
- 24-hour illumination
- Fits Shield models in 9mm, .40 S&W, and .45 calibers; does not fit EZ380
- LitePipes: available in Green or Orange

MPSXN321 (R) (F)

MPSXN421 (R) (F)

MSRP: \$135.00



S&W Revolver Rear Sight



- Rear Sight
- All-steel construction
- Fully adjustable for windage and elevation
- Fits S&W Revolvers with factory adjustable rear sights (all models after 1998)
- Interchangeable LitePipes:

SWR11

MSRP: \$90.00



M&P Adjustable Sight Set



- Front and Rear Sight Set
- Fully adjustable for windage and elevation
- Fits full sized M&P and Pro models in 9mm, 40 S&W & 45 ACP; does not fit M&P CORE
- Front Interchangeable LitePipes:
- Rear Interchangeable LitePipes:

SWMPE21

MSRP: \$95.95



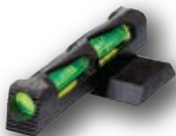
M&P, M&P Shield



- LiteWave® Front Sight
- Fits M&P full sized and compact models and M&P Shield; does not fit M&P 22
- Interchangeable LitePipes: ● ● ○

SW2014

MSRP: \$34.95



M&P



- LiteWave® Rear Sight
- Fits M&P full size and compact models; does not fit M&P 22
- Interchangeable LitePipes: ● ● ●

MPLW11

MSRP: \$55.95



M&P Shield



- LiteWave® Rear Sight
- Fits M&P Shield models in 9mm, 40 S&W and 45 ACP
- Interchangeable LitePipes: ● ● ●

MPSLW11

MSRP: \$55.95



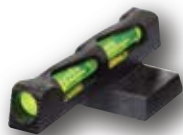
1911



- LiteWave® Front Sight
- Fits all production model 1911 and 1911 E Series; does not fit Performance Center or DK models
- Interchangeable LitePipes: ● ● ○

SW11LW01

MSRP: \$41.95



M&P 22



- LiteWave® Front Sight
- Fits full size M&P 22 only; does not fit 22 compact models
- Interchangeable LitePipes: ● ● ○

MP2012

MSRP: \$41.95



SMITH & WESSON

Pinned Sight

- Overmolded Front Sight
- Fits S&W pinned sight revolvers with 2.5-in. or longer barrels and adjustable rear sight
- LitePipes: available in Orange, Green or Red

SW1002-O ●
SW1002-G ●
SW1002-R ●
MSRP: \$45.40

Pinned Sight

- Overmolded Front Sight
- Fits S&W pinned sight revolvers with 1.8-in. and 2.1-in. barrels and fixed rear sight
- LitePipes: available in Green or Red

SW1001-G ●
SW1001-R ●
MSRP: \$45.40

Pinned Sight

- Front Sight
- Fits S&W pinned sight revolvers with 2.5-in. or longer barrels and adjustable rear sight
- Interchangeable LitePipes: ● ● ○

SWLW1002
MSRP: \$41.95

617, 647, 648

- Overmolded Front Sight
- Fits all 617, 647 and 648 revolvers
- LitePipes: available in Green or Red

SW617-G ●
SW617-R ●
MSRP: \$45.40

"DX" Revolvers

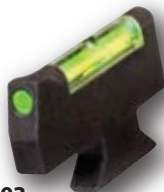
- Overmolded Front Sight
- Fits S&W revolvers with DX-style front sights
- LitePipes: available in Green or Red

SW3002-G ● (Sight Height: .208-in.)
SW3002-R ● (Sight Height: .208-in.)
SW3001-G ● (Sight Height: .250-in.)
SW3001-R ● (Sight Height: .250-in.)
SW3003-G ● (Sight Height: .310-in.)
SW3003-R ● (Sight Height: .310-in.)
MSRP: \$45.40

SW3003

SW3002

SW3001



SPRINGFIELD



LiteWave H3® for Springfield

- LiteWave H3® Sight Set
- Steel construction
- Brightest, fully-encapsulated Tritium
- 24-hour illumination
- Fits all production models with fixed sights; does not fit GI, 3-in. EMP and Mil-Spec models
- LitePipes: available in Green or Orange

SFN321 (R) ● (F) ●

SFN421 (R) ● (F) ●

MSRP: \$135.00



LiteWave H3® for Springfield XD

- LiteWave H3® Sight Set
- Steel construction
- Brightest, fully-encapsulated Tritium
- 24-hour illumination
- Fits XD, XD-S, XD-E and XD-M models; does not fit the XD 5.25
- LitePipes: available in Green or Orange

XDN321 (R) ● (F) ●

XDN421 (R) ● (F) ●

XDN521 (R) ● (F) ●

XDN621 (R) ● (F) ●

MSRP: \$135.00

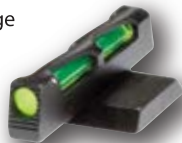


1911 Front Sight

- LiteWave® Front Sight
- Fits 1911 Production Models, including Range Officer; does not fit GI and Mil-Spec models
- Interchangeable LitePipes: ● ● ○

SF2105

MSRP: \$41.95



1911 Rear Sight

- LiteWave® Rear Sight
- Fits 1911 Production Models; does not fit GI and Mil-Spec models
- Interchangeable LitePipes: ● ● ●

SF2109

MSRP: \$55.95



SPRINGFIELD

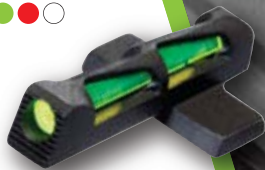
XD Front Sight



- LiteWave® Front Sight
- Fits XD, XD-S, XD-M and XD-E models; does not fit the XD 5.25
- Interchangeable LitePipes: ● ● ○

XD2014

MSRP: \$41.95



XD Rear Sight



- LiteWave® Rear Sight
- Fits XD, XD-S, XD-M and XD-E models; does not fit the XD 5.25
- Interchangeable LitePipes: ● ● ●

XDLW11

MSRP: \$55.95



STACCATO

LiteWave H3® Staccato Sight Sets

NEW

H3

- LiteWave H3® Sight Set
- Steel construction
- Brightest, fully-encapsulated Tritium
- 24-hour illumination
- Fits Staccato 2011, P and C2 non-optic models with fixed sights
- LitePipes: available in Green or Orange

STIN321 (R) ● (F) ●

STIN421 (R) ● (F) ●

STIN521 (R) ● (F) ●

STIN621 (R) ● (F) ●

MSRP: \$135.00



TAURUS

PT 1911

- Interchangeable Front Sight
- Fits PT 1911 pistols
- Interchangeable LitePipes: ● ● ○

TR1911

MSRP: \$39.20



WALTHER

P22

- Interchangeable Front Sight
- Sight Height: .215-in. (same as Walther #3)
- Fits P22 and PPQ 22 models
- Interchangeable LitePipes: ● ● ○

WAL2012

MSRP: \$39.20



P99, SW99, PPQ

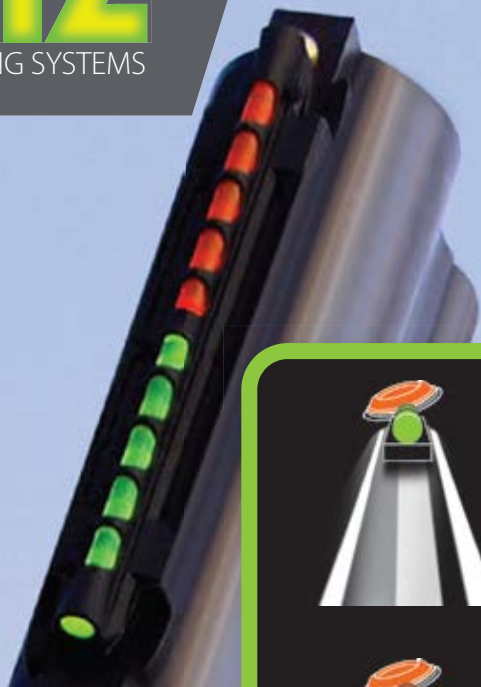
- Overmolded Front Sight
- Fits the CCP, PPQ M2, PPX, P99 and SW99 models
- LitePipes: available in Green or Red

SW3004-G ●

SW3004-R ●

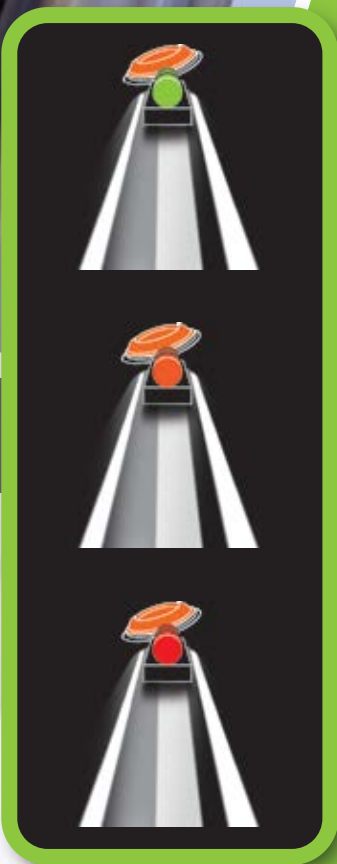
MSRP: \$45.40





Shooting Tip # 27: Selecting LitePipe Color

Which color LitePipe should I use? This is a question that's very common, but the answer has several considerations. When choosing a color one should consider the following: contrast with the color of the target or of the surroundings, color blindness, desired intensity and of course personal preference. Which HIVIZ LitePipe can be seen the best? The human eye is most sensitive to the green LitePipe. Green will be the most visible in all light conditions, followed by orange and then red.



SHOTGUN SIGHTS

SEE WHAT YOU'VE BEEN MISSING

MAGNETIC


**HIVIZ MAGNETIC SIGHTS,
BRIGHT AND EASY TO INSTALL**

When you're looking for the best,
trust the Original!

In 1996 HIVIZ® created the original magnetic shotgun sight and continues to be the industry leader in this category. HIVIZ magnetic shotgun sights use powerful, rare earth magnets to attach sights easily yet firmly to the rib of nearly any shotgun. Featuring easily replaceable LitePipes in multiple colors, HIVIZ has a magnetic shotgun sight that is perfect for you.

- Attaches directly behind factory bead
- Available in a variety of styles, colors and sight diameters for every shooter's preference

*Sight must fit your exact shotgun rib width for proper installation. Not compatible with carbon fiber or aluminum ribs. See shotgun selection charts on pgs. 43 - 46 for compatibility information.


Magni-Hunter

- Magnetic Shotgun Sight
- For cross-eye dominance
- Snap-on base
- Two base sizes available: Narrow and Wide
- Interchangeable LitePipes: ● ●

MGH2007-I: Narrow Cross-Eye Dominant Correcting Sight (Fits ribs: .230 to .330-in. (15/64 to 21/64-in./5.8 to 8.3mm))

MGH2007-II: Wide Cross-Eye Dominant Correcting Sight (Fits ribs: .355 to .440-in. (23/64 to 7/16-in./9 to 11.1mm))

MSRP \$34.95

MAGNIOptics

M-Series Magnetic Sights

- Magnetic Shotgun Sight
- Snap-on base
- Ultra-Narrow to Extra Wide designs available
- Includes two diameters of LitePipes and unique HIVIZ® Two-Tone LitePipe
- Interchangeable LitePipes: ● ● ● ●

M200: Ultra Narrow M-Series (Fits ribs: .171 to .265-in. (11/64 to 17/64-in./4.2 to 6.7mm))

M300: Narrow M-Series (Fits ribs: .218 to .328-in. (7/32 to 21/65-in./5.5 to 8.3mm))

M400: Wide M-Series (Fits ribs: .328 to .437-in. (21/64 to 7/16-in./8.3 to 11.1mm))

MSRP: \$23.10





BirdBuster®

- Magnetic Shotgun Sight
- Snap-on base
- Includes three sight frames to fit rib sizes 1/4 to 3/8-in.
- Interchangeable LitePipes: ●●▲▲▲

BB2005

MSRP: \$24.05

Remington Easy Target Acquisition (ETA)

- Magnetic Shotgun Sight
- Snap-on base
- Fits Remington 870, 11-87 and 1100 models with 9/32-in. rib
- Interchangeable LitePipes: ●●●●▲▲

RM2006

MSRP: \$17.95

Two-In-One

- Magnetic Shotgun Sight
- Snap-on base
- Two sights in one
- Ultra-Narrow to Extra Wide designs available
- Includes unique HIVIZ® combined Green and Orange LitePipes
- Reversible LitePipes: ●●▲▲▲

TO200: Ultra Narrow Two-In-One (Fits ribs: .171 to .265-in. (11/64 to 17/64-in./4.2 to 6.7mm))

TO300: Narrow Two-In-One (Fits ribs: .218 to .328-in. (7/32 to 5/16-in./5.5 to 8.3mm))

TO350: Wide Two-In-One (Fits ribs: .330 to .355-in. (21/64 to 23/64-in./8.4 to 9mm))

TO400: Extra-Wide Two-In-One (Fits ribs: .360 to .440-in. (23/64 to 7/16-in./9 to 11.1mm))

MSRP: \$25.50

S-Series Magnetic Sight

- Magnetic Shotgun Sight
- Snap-on base
- Ultra-Narrow to Wide designs available
- LitePipes: available in Green or Red

S200-G: Ultra Narrow S-Series ● (Fits ribs: .171 to .265-in. (11/64 to 17/64-in./4.2 to 6.7mm))

S200-R: Ultra Narrow S-Series ● (Fits ribs: .171 to .265-in. (11/64 to 17/64-in./4.2 to 6.7mm))

S300-G: Narrow S-Series ● (Fits ribs: .218 to .328-in. (7/32 to 5/16-in./5.5 to 8.3mm))

S300-R: Narrow S-Series ● (Fits ribs: .218 to .328-in. (7/32 to 5/16-in./5.5 to 8.3mm))

S400-G: Wide S-Series ● (Fits ribs: .328 to .437-in. (21/64 to 7/16-in./8.3 to 11.1mm))

S400-R: Wide S-Series ● (Fits ribs: .328 to .437-in. (21/64 to 7/16-in./8.3 to 11.1mm))

MSRP: \$17.85

PLAIN BARREL



NEW

H3

LiteWave H3® Plain Barrel Sight

- LiteWave H3® Plain Barrel Attachment
- Brightest, fully-encapsulated Tritium
- 24-hour illumination
- Fits most plain barrel shotguns with removable front bead

• LitePipe: ●

PBN301

MSRP: \$55.00



MPB Shotgun Sight

- Overmolded Plain Barrel Attachment
- Snap-on base
- Fits all 12, 16, and 20-gauge plain barrel shotguns without ribs
- LitePipes come in .175 and .135-in. diameter
- Interchangeable LitePipes: ● ●
- Also available in a Tactical model (MPB-TAC)

MPB

MSRP: \$23.10



MPB Tactical Shotgun Sight

- Plain Barrel Attachment
- Snap-on base
- Fits shotgun models with extended magazine tubes
- Fits all 12-gauge plain barrel shotguns without ribs
- LitePipes come in .175 and .135-in. diameter
- Interchangeable LitePipes: ● ●
- Also available in a Non-Tactical model (MPB)

MPB-TAC

MSRP: \$25.30





SCREW ATTACH

WHY A BEAD REPLACEMENT?

BEAD SIGHT ADVANTAGES:

- A permanent bead that can't be lost or misplaced in transport or when hunting in thick brush or in blinds.
- Low profile similar to factory bead.
- Interchangeable LitePipes (available with some products) giving you a variety of colors for a variety of conditions.
- Some bead sights offer a variety of sight diameters and shapes.
- Comes with screws in five thread sizes to fit most shotguns.



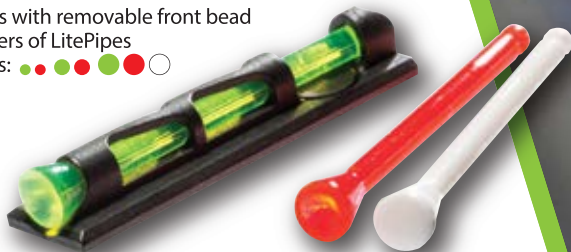
LiteWave H3® CompSight®

- LiteWave H3® Screw Attach Bead Replacement
- Low profile steel base
- Brightest, fully-encapsulated Tritium
- 24-hour illumination
- Fits most ribbed shotguns with removable front bead
- LitePipe: ●
- PMN301**
- MSRP: \$55.00**



LiteWave® CompSight®

- LiteWave® Screw Attach Bead Replacement
- Low profile steel base
- Fits most ribbed shotguns with removable front bead
- Includes multiple diameters of LitePipes
- Interchangeable LitePipes: ●●●●○
- PMLW01**
- MSRP: \$35.95**





Shooting Tip # 1: Determine Eye Dominance

With both eyes open point your index finger at an object across the room. Now close your left eye. If you are still pointing at the object, as in #3, you are right eye dominant. If it appears you are pointing to the side of the object, as in #4, you are left eye dominant. There are varying degrees of eye dominance, but this is the most basic test. Previous solutions to cross-eye dominance ranged from switching shoulders to obscuring the vision of the offending eye. Our Magni-Optic® technology solves it instantly.

Fig. 1



Fig. 2



Fig. 3



Fig. 4

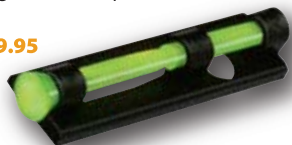


CompSight®

- The original CompSight®
- Screw Attach Bead Replacement
- Low profile steel base
- Fits most ribbed shotguns with removable front bead
- Includes multiple diameters of LitePipes
- Interchangeable LitePipes: ●●●●●●●●●●

PM1002

MSRP: \$39.95



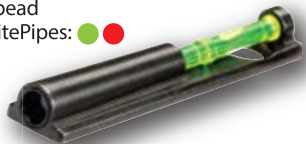
MAGNI-Optics®

Magni-Comp

- Screw Attach Bead Replacement
- For cross-eye dominance
- Fits most ribbed shotguns with removable front bead
- Interchangeable LitePipes: ●●

MGC2006

MSRP \$41.95



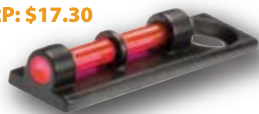
Flame®

- Screw Attach Bead Replacement
- Low profile base
- Bright and easy to install
- Fits most ribbed shotguns with removable front bead
- LitePipes: available in Green or Red

FL2005-G ●

FL2005-R ●

MSRP: \$17.30



MiniComp

- Screw Attach Bead Replacement
- Smaller alternative to the CompSight®
- Bright and easy to install
- Fits most ribbed shotguns with removable front bead
- Interchangeable LitePipes: ●●●●●●●●●●

PM2011

MSRP: \$20.30





SCREW ATTACH

TriComp

- Screw Attach Bead Replacement
- Bright and easy to install
- Fits most ribbed shotguns with removable front bead
- Includes Triangular, Small and Large Round LitePipes
- Interchangeable

LitePipes: ▲▲▲△●●○●●○

PM2003

MSRP: \$39.95



Spark II

- Screw Attach Bead Replacement
- Bright and easy to install
- Fits plain barrel and ribbed shotguns with removable front bead
- LitePipes: available in Green or Red

BD1007 ●

BD1008 ●

MSRP: \$11.05



Spark III

- Screw Attach Bead Replacement
- Bright and easy to install
- Fits most ribbed shotguns with removable front bead
- Large LitePipe: .090-in. in diameter
- Interchangeable LitePipes: ●●●●●●●●

SK2011

MSRP: \$15.70



FlashPoint

- Screw Attach Bead Replacement
- Bright and easy to install
- Fits most ribbed shotguns with removable front bead
- Includes Round and Triangular LitePipes in 3 heights
- Interchangeable LitePipes: ●●●▲▲▲▲▲▲▲▲▲▲

FP1001

MSRP: \$28.15



SCREW ATTACH

TURKEY/DEER
SIGHT SETS

TriViz®



- Screw Attach Sight Set
- Perfect for turkey season
- Fully adjustable rear sight for windage and elevation
- Features the HIVIZ® patented unique triangular sight design
- Fits ribbed shotguns from 1/4 to 3/8-in. (6.3 to 9.7mm) with removeable front bead
- Interchangeable triangular LitePipes allow for elevation adjustment in the field
- Interchangeable LitePipes: ▲▲▲●

TT1001

MSRP: \$37.65



C-Series



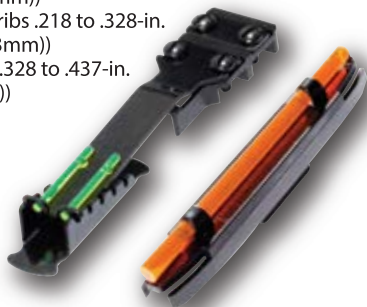
- Screw Attach Rear Sight, Magnetic Front Sight
- Two sights in one! Our best-selling M-Series magnetic front sight combined with our two-bead rear sight for optimum versatility
- Fully adjustable rear sight for windage and elevation
- Ultra-Narrow to Wide designs available
- Front Interchangeable LitePipes: ●●
- Rear LitePipe: ●

C200-2: Ultra Narrow C-Series (Fits ribs .171 to .265-in. (11/64 to 17/64-in./4.2 to 6.7mm))

C300-2: Narrow C-Series (Fits ribs .218 to .328-in. (7/32 to 21/64-in./5.5mm to 8.3mm))

C400-1: Wide C-Series (Fits ribs .328 to .437-in. (21/64 to 7/16-in./8.3 to 11.1mm))

MSRP: \$29.95






SCREW ATTACH

TURKEY/DEER SIGHT SETS

Tom Buster® II


- Screw Attach Sight Set 
- Turkey sight combo pack
- Fully adjustable rear sight for windage and elevation
- Fits shotguns with threaded bead, rib widths from .250 to .437-in. (1/4 to 7/16-in.) (6 to 11.1mm)
- Front Interchangeable LitePipes: ● ●
- Rear LitePipe: ●

TB2004

MSRP: \$29.95



Remington Easy Target Acquisition (ETA)


- Screw Attach Rear Sight, Magnetic Front Sight 
- For turkey and deer hunting
- Fully adjustable rear sight for windage and elevation
- Fits all Remington shotguns with 9/32-in. wide rib
- Comes with one Red and one Green tall LitePipe, one Green round short LitePipe, and rear Green LitePipes
- Front Interchangeable LitePipes: ● ●
- Rear LitePipe: ●

RM2013

MSRP: \$37.65



TS-Series Rear Sight

- Screw Attach Rear Sight 
- Fully adjustable rear sight for windage and elevation
- The perfect companion to any HIVIZ® front sight
- Fits most vent ribbed shotguns 1/4 to 7/16-in.
- LitePipe: ●

TS-2002 (Fits ribs 1/4 to 5/16-in.)

TS-1002 (Fits ribs 3/8 to 7/16-in.)

MSRP: \$16.85



HIVIZ[®]

SHOOTING SYSTEMS



Fig. 1

Shooting Tip # 21: Co-Witnessing

Co-witnessing uses one sight system to zero or confirm zero of another sight system. In this tip, we are using back-up iron sights to co-witness an optic device because optic devices are susceptible to damage or failure. Co-witnessing an optic AR2008 makes it viable to switch an optic device between rifles or for confirming zero if the optic has been removed or suffered damage. First, ensure zero of HIVIZ front/peep rear sights (1) at the desired range (usually zeroed at 25 yards and confirmed at 100 yards). Next, install the optic device and view the dot through the peep sight with the HIVIZ sight centered as if shooting (2). Adjust the optic device until the dot is superimposed or forms a figure 8 on the HIVIZ front sight (3). Take your first shot using the optic device. Raise your head until the dot appears in the center of the optic (4). Test fire to confirm point-of-impact at 100 yards and make any minor adjustment necessary. Note: This technique will not work with higher mounts or magnified optic devices such as the ACOG sight or conventional rifle scopes.



Fig. 2



Fig. 3



Fig. 4

RIFLE SIGHTS

SEE WHAT YOU'VE BEEN MISSING

HENRY

Henry H001 Front Sight

- Interchangeable Front Sight
- Features protective sight hood
- Bright and easy to install
- Improves accuracy on lever action rifles
- Combine with the Universal Rear Sight (UNI2006) for an even better sight picture

- Interchangeable LitePipes: ● ● ● ●

HHVS001 (Fits H001, H001L, and H001Y models chambered in .22LR)

HHVS001M (Fits H001M models chambered in .22 Mag)

MSRP: \$44.00



Henry Rifle Sight Sets



- LiteWave® Front Sight, Adjustable Rear Combo Sight Set
- Available in 4 different tack-driving sets
- Bright and easy to install
- Fully adjustable rear sight for windage and elevation
- Front Interchangeable LitePipes: ● ● ● ●
- Rear Interchangeable LitePipes: ● ● ● ●

HHVS41 (Fits H006, ES, ML, OA, R, S, SD, TT, WL)

HHVS450 (Fits H001T, TER, TPM, H003T, H004, AB, CM2, ES, FM, GE, MS2, S, SE, SE2, STS, TT, Y)

HHVS500 (Fits H001TM, TMER, TMLP, TMRP, TV, H003TM, H0004M, MD3, SEM, SEV, SM, SV, V, VD3, H006M, MD3, MML, MR, MS, MSD, C, CBS, CD3, CML, CR, CS, CSD H009B, CC, BWL, H010B, CC, BWL, H012, MR41, R)

HHVS570 (Fits H009CC, H010, AW, WL, H012CR, M, MR)

HHVS620 (Fits H009, H009AW)

MSRP: \$49.95



RUGER



Ruger 10/22 Sight Set

- LiteWave® Front Sight, Foldable/Adjustable Rear Combo Sight Set
- Bright and easy to install
- Rear sight is foldable and fully adjustable for windage and elevation
- Fits standard models with an 18.5-in. barrel, Carbine and Take-down models
- Interchangeable LitePipes for Front and Rear: ● ● ● ●

RG1022

MSRP: \$48.95



UNIVERSAL



DOVM-260



DOVM-315

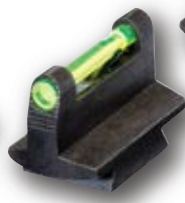
Universal Front Sights

- Universal Front Dovetail Sight
- Bright and easy to install
- Designed for rifles and muzzleloaders
- Fits a wide selection of rifles with a standard 3/8-in. dovetail
- Interchangeable LitePipes: ● ●
- **DOVM-260** (1/4-in. height)
- **DOVM-315** (5/16-in. height)
- **DOVM-380** (3/8-in. height)
- **DOVM-420** (7/16-in. height)
- **DOVM-500** (1/2-in. height)

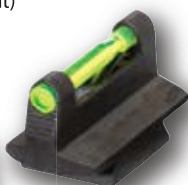
MSRP: \$25.95



DOVM-500



DOVM-420



DOVM-380

Universal Rear Sight

- Universal Rear Dovetail Sight
- Bright and easy to install
- Fully adjustable for windage and elevation
- Fits a wide selection of rifles with a standard 3/8-in. dovetail
- Interchangeable LitePipes: ● ●

UNI2006

MSRP: \$30.10



TACTICAL

AR Post



- AR Front Sight Post
- Incredibly durable
- Adjustable for elevation
- Bright and easy to install
- Features a detent plunger to tighten engagement and prevent any side-to-side movement
- Fits AR and M4 rifles with A-Frame or folding sights, including fixed and detachable models
- Interchangeable LitePipes: ● ●

AR2008

MSRP: \$33.05



AK Post



- AK Front Sight Post
- Robust and affordable
- Adjustable for elevation
- Bright and easy to install
- Includes a sight tool for easy installation and sight elevation adjustment
- Fits AK-47, 74 and AKM pattern rifles
- Interchangeable LitePipes: ● ●

AK2010

MSRP: \$33.05

Shooting Tip # 16: Gun Mount & Drag

One of the most common errors is starting the mount with the back hand. If the first move you make has both hands lifting in an upward direction the gun butt will hang up under the armpit. The correct mount always begins with the front hand pushing toward the target. Only after the gun stock has started its forward motion should the back hand begin lifting the stock towards the cheek. Perfecting a proper mount technique will allow the stock to arrive consistently at the cheek assuring proper rib-to-eye alignment.

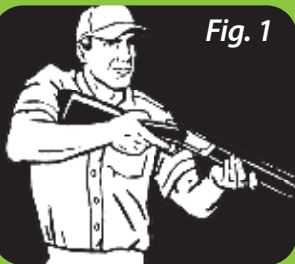


Fig. 1



Fig. 2

ACCESSORIES

SEE WHAT YOU'VE BEEN MISSING

RECOIL PADS

Slip-On Pad – Small

- Slip-On Recoil Pad
- 1-in. thick
- Fits stocks from 4.5-in H x 1.375-in W up to 4.6875-in H x 1.5-in W
- See selection chart for fit information

SP-S

MSRP: \$20.55

Slip-On Pad – Medium

- Slip-On Recoil Pad
- 1-in thick
- Fits stocks from 4.6875-in H x 1.625-in W up to 4.875-in H x 1.6875-in W
- See selection chart for fit information

SP-M

MSRP: \$20.55



SLIP-ON PAD SELECTION

SP-S (Small) 1" thick Slip-On Pad fits: 4 1/2" x 1 3/8" up to 4 11/16" x 1 1/2" stocks

BROWNING	A Bolt, A Bolt Medallion (most models) BLR model 81.
MOSSBERG	Most wood and synthetic stocks youth 500 models.
WINCHESTER NEW ENGLAND FIREARMS	Most model 94 lever actions. Pardner and Handi-Rifles; most youth models.
MARLIN	Most Marlin lever action rifles.

SP-M (Medium) 1" thick Slip-On Pad fits: 4 11/16" x 1 5/8" up to 4 7/8" x 1 11/16" stocks

BAIKAL	Most models.
BENELLI	Nova, M-1 Field, Super Black Eagle 12 ga. (non-Comfortech).
BERETTA	Models with 5 inch stocks.
BROWNING MOSSBERG	Gold, Silver and Maxus Synthetic Stocks. 500, 835, 930 and 935; most wood and synthetic stocks except youth models.
STOEGER	Most 12 ga. models.
WINCHESTER NEW ENGLAND FIREARMS	Most 1200, 1300 and 1400 models. Most Pardner and Handi-Rifles models.

LITEPIPE KIT

LiteWave® Handgun Replacement LitePipe Set

Tailor your sights to fit your needs with our LiteWave® Handgun Replacement LitePipe Set. This set comes with 10 Lite Pipes for all LiteWave sights. Includes:

- Front Interchangeable LitePipes:
(Red and Green) (version 5 and 6)
- Rear Interchangeable LitePipes:
(two Green, two Red, two Black)

LWH-KIT

MSRP: \$9.95

**SIGHT TOOL****HIVIZ® Sight Installation Tool**

- Sight Installation Tool for all Glock, Walther P99 and Smith & Wesson SW99 Front Sights.

GLOCK-TL

MSRP: \$16.65

SHOTGUN SIGHT SELECTION

BERETTA

MODEL	MAGNETIC SIGHTS	BEAD REPLACEMENT	REAR SIGHTS OR SIGHT SETS
686 687 models with narrow rib AL390 AL304 AL39 Field AL391 Urika Field A300 A400 Xplor Field SV10 Perennia	BirdBuster® (BB2005) M-Series, Ultra Narrow Model (M200) Magni-Hunter (MGH2007-I) S-Series, Ultra Narrow Model (S200) Two-In-One, Ultra Narrow Model (TO200), Narrow Model (TO200)	Flame (FL2005) Magni-Comp (MGC2006) CompSight (PM1002; PMLW01) TriComp (PM2003) MiniComp (PM2011) Spark III (SK2011) Spark II (BD1007)	C-Series, Ultra Narrow Model (C200-2) Four-In-One (FO2008-I) TriViz (TT1001)
T & ST Rib Pintail Auto Silver Pigeon Skeet 682 Sporting & Gold Skeet	BirdBuster® (BB2005) M-Series, Narrow Model (M300) Magni-Hunter (MGH2007-I) S-Series, Narrow Model (S300) Two-In-One, Narrow Model (TO300)	Flame (FL2005) Magni-Comp (MGC2006) CompSight (PM1002; PMLW01) TriComp (PM2003) MiniComp (PM2011) Spark III (SK2011) Spark II (BD1007)	
682 Trap Gold Trap Silver Pigeon Trap 687 Diamond Pigeon Trap	M-Series, Wide Model (M400) S-Series, Wide Model (S400) Two-In-One, Extra Wide Model (TO400)	Spark II (BD1007) Flame (FL2005) Magni-Comp (MGC2006) CompSight (PM1002; PMLW01) TriComp (PM2003) MiniComp (PM2011)	
Gold Onyx Sporting Models Diamond Pigeon Sporting Models		Flame (FL2005) Magni-Comp (MGC2006) CompSight (PM1002; PMLW01) TriComp (PM2003) MiniComp (PM2011) Spark III (SK2011)	

BENELLI

MODEL	MAGNETIC SIGHTS	BEAD REPLACEMENT	REAR SIGHTS OR SIGHT SETS
Super Black Eagle I, II, III M2 Field Nova Super Nova (All 12 Ga.) Models with Ventilated Rib	BirdBuster® (BB2005) M-Series, Narrow Model (M300) Magni-Hunter (MGH2007-II) S-Series, Narrow Model (S300) Two-In-One, Narrow Model (TO300)	Flame (FL2005) Magni-Comp (MGC2006) CompSight (PM1002; PMLW01) TriComp (PM2003) MiniComp (PM2011) Spark III (SK2011) Spark II (BD1007)	C-Series, Narrow Model (C300-2) Four-In-One (FO2008-II) TriViz (TT1001)
M2 Field Vinci Super Vinci All 20 Ga. Model with Ventilated Rib	BirdBuster® (BB2005) M-Series, Ultra Narrow Model (M200) Magni-Hunter (MGH2007-I) S-Series, Ultra Narrow Model (S200) Two-In-One, Ultra Narrow Model (TO200)	Flame (FL2005) Magni-Comp (MGC2006) CompSight (PM1002; PMLW01) TriComp (PM2003) MiniComp (PM2011) Spark III (SK2011)	C-Series, Ultra Narrow Model (C200-2) Four-In-One (FO2008-I) TriViz (TT1001)
Cordoba Super Sport Sport II Legacy 828U Ultralight (All 12 Ga. & 20 Ga.)		Flame (FL2005) Magni-Comp (MGC2006) CompSight (PM1002; PMLW01) TriComp (PM2003) MiniComp (PM2011) Spark III (SK2011)	C-Series, Ultra Narrow Model (C200-2) Four-In-One (FO2008-I) TriViz (TT1001)

Use this handy chart to help find the sight that fits your brand of shotgun.

For models and brands not listed, please call us for assistance in selecting the correct sight: 800.589.4315.

BROWNING

MODEL	MAGNETIC SIGHTS	BEAD REPLACEMENT	REAR SIGHTS OR SIGHT SETS
Gold Field Models (28 & 410 Ga.) Silver Field Models Maxus Field Models Citori Citori Satin Hunter (20 Ga.) 625 Sporting (20, 28 & 410 Ga.) Cynergy (20, 28 & 410 Ga.) 725 Field New A5 Auto	BirdBuster® (BB2005) M-Series, Ultra Narrow Model (M200) Magni-Hunter (MGH2007-I) S-Series, Ultra Narrow Model (S200) Two-In-One, Ultra Narrow Model (TO200)	Flame (FL2005) Magni-Comp (MGC2006) CompSight (PM1002; PMLW01) TriComp (PM2003) MiniComp (PM2011) Spark III (SK2011)	C-Series, Ultra Narrow Model (C200-2) Four-In-One (FO2008-I) TriViz (TT1001)
BPS, All Models Gold (10 Ga.) Citori Satin Hunter (12 Ga.) 625 Sporting (12 Ga.) Cynergy (12 Ga.) Citori White Lightning Cynergy Field (12 Ga.)	BirdBuster® (BB2005) M-Series, Narrow Model (M300) Magni-Hunter (MGH2007-I) S-Series, Narrow Model (S300) Two-In-One, Narrow Model (TO300)	Flame (FL2005) Magni-Comp (MGC2006) CompSight (PM1002; PMLW01) TriComp (PM2003) MiniComp (PM2011) Spark III (SK2011)	C-Series, Narrow Model (C300-2) Four-In-One (FO2008-II) TriViz (TT1001)
Original A-5 Auto with ribbed barrel – Due to reciprocating barrel on the A-5 we recommend a screw-attach sight on all models.		Flame (FL2005) Magni-Comp (MGC2006) CompSight (PM1002; PMLW01) TriComp (PM2003) MiniComp (PM2011) Spark III (SK2011)	Four-In-One (FO2008-I) TriViz (TT1001)
BT99 Cynergy CX Citori Micro Citori Grade VII	M-Series, Wide Model (M400) S-Series, Wide Model (S400) Two-In-One, Wide Model (TO350)	Flame (FL2005) Magni-Comp (MGC2006) CompSight (PM1002; PMLW01) TriComp (PM2003) MiniComp (PM2011) Spark III (SK2011)	

CZ-USA

MODEL	MAGNETIC SIGHTS	BEAD REPLACEMENT	REAR SIGHTS OR SIGHT SETS
Redhead Over/Under, All Models Canvasback Over/Under, All Models Woodcock Over/Under, All Models Mallard Over/Under, All Models	BirdBuster® (BB2005) M-Series, Narrow Model (M300) Magni-Hunter (MGH2007-I) S-Series, Narrow Model (S300) Two-In-One, Narrow Model (TO300)	Flame (FL2005) Magni-Comp (MGC2006) CompSight (PM1002; PMLW01) TriComp (PM2003) MiniComp (PM2011) Spark III (SK2011)	C-Series, Narrow Model (C300-2) Four-In-One (FO2008-II) TriViz (TT1001)
Ringneck Side-by-Side, All Models Bobwhite Side-by-Side, All Models		Flame (FL2005) Magni-Comp (MGC2006) CompSight (PM1002; PMLW01) TriComp (PM2003) MiniComp (PM2011) Spark III (SK2011)	

Use this handy chart to help find the sight that fits your brand of shotgun.

For models and brands not listed, please call us for assistance in selecting the correct sight: 800.589.4315.

SHOTGUN SIGHT SELECTION

MOSSBERG

MODEL	MAGNETIC SIGHTS	BEAD REPLACEMENT	REAR SIGHTS OR SIGHT SETS
500 535 835 935 930 505 Youth Models with ventilated rib	M-Series, Wide Model (M400) S-Series, Wide Model (S400) Two-In-One (TO350) *Magnetic sights fit non-ported barrels only	Flame (FL2005) Magni-Comp (MGC2006) CompSight (PM1002; PMLW01) TriComp (PM2003) MiniComp (PM2011) Spark III (SK2011) *Screw-Attach sights fit ported or non-ported barrels	C-Series, Wide Model (C400-1) Four-In-One (FO2008-II) TriViz (TT1001)

PERAZZI

MODEL	MAGNETIC SIGHTS	BEAD REPLACEMENT	REAR SIGHTS OR SIGHT SETS
All Models		Flame (FL2005) Magni-Comp (MGC2006) CompSight (PM1002; PMLW01) TriComp (PM2003) MiniComp (PM2011) Spark III (SK2011)	

REMINGTON

MODEL	MAGNETIC SIGHTS	BEAD REPLACEMENT	REAR SIGHTS OR SIGHT SETS
870 Express 1187 Sportsmen with ventilated rib *Both models have a pressed-in bead. In order to use a Screw-Attach sight, the bead will have to be removed and the rib drilled and tapped.	BirdBuster* (BB2005) M-Series, Narrow Model (M300) Magni-Hunter (MGH2007-I) Remington ETA (RM2006) S-Series, Narrow Model (S300) Two-In-One, Narrow Model (TO300)	Flame (FL2005) Magni-Comp (MGC2006) CompSight (PM1002; PMLW01) TriComp (PM2003) MiniComp (PM2011) Spark III (SK2011)	C-Series, Narrow Model (C300-2) Remington ETA (RM2013)
870 Wing Master 1100 Field with ventilated rib Versa Max	BirdBuster* (BB2005) M-Series, Narrow Model (M300) Magni-Hunter (MGH2007-I) Remington ETA (RM2006) S-Series, Narrow Model (S300) Two-In-One, Narrow Model (TO300)	Flame (FL2005) Magni-Comp (MGC2006) CompSight (PM1002; PMLW01) TriComp (PM2003) MiniComp (PM2011) Spark III (SK2011)	C-Series, Narrow Model (C300-2) Remington ETA (RM2013) Four-In-One (FO2008-II) TriViz (TT1001)

RUGER

MODEL	MAGNETIC SIGHTS	BEAD REPLACEMENT	REAR SIGHTS OR SIGHT SETS
Red Label, All Models	BirdBuster* (BB2005) M-Series, Narrow Model (M300) Magni-Hunter (MGH2007-I) S-Series, Narrow Model (S300) Two-In-One, Narrow Model (TO300)	Flame (FL2005) Magni-Comp (MGC2006) CompSight (PM1002; PMLW01) TriComp (PM2003) MiniComp (PM2011) Spark III (SK2011)	C-Series, Narrow Model (C300-2) Four-In-One (FO2008-II) TriViz (TT1001)

Use this handy chart to help find the sight that fits your brand of shotgun.

For models and brands not listed, please call us for assistance in selecting the correct sight: 800.589.4315.

KRIEGHOFF

MODEL	MAGNETIC SIGHTS	BEAD REPLACEMENT	REAR SIGHTS OR SIGHT SETS
All Models Note: Some Krieghoff un-singles and top singles with adjustable ribs may require a special nut to attach the sight. This nut is available upon request.		Flame (FL2005) Magni-Comp (MGC2006) CompSight (PM1002; PMLW01) TriComp (PM2003) MiniComp (PM2011) Spark III (SK2011)	

SKB

MODEL	MAGNETIC SIGHTS	BEAD REPLACEMENT	REAR SIGHTS OR SIGHT SETS
All Models		Flame (FL2005) Magni-Comp (MGC2006) CompSight (PM1002; PMLW01) TriComp (PM2003) MiniComp (PM2011) Spark III (SK2011)	

STOEGER

MODEL	MAGNETIC SIGHTS	BEAD REPLACEMENT	REAR SIGHTS OR SIGHT SETS
M3500 M3000 M3020 P3000	M-Series, Ultra Narrow Model (M200) Magni-Hunter (MGH2007-I) S-Series, Ultra Narrow Model (S200) Two-In-One, Ultra Narrow Model (TO200)	Magni-Comp (MGC2006) CompSight (PM1002; PMLW01) TriComp (PM2003) MiniComp (PM2011) Spark III (SK2011)	Four-In-One (FO2008-I) TriViz (TT1001)
P350	BirdBuster® (BB2005) BirdBuster® (BB2005) M-Series, Narrow Model (M300) Magni-Hunter (MGH2007-I) S-Series, Narrow Model (S300) Two-In-One, Narrow Model (TO300)	Flame (FL2005) Flame (FL2005) Magni-Comp (MGC2006) CompSight (PM1002; PMLW01) TriComp (PM2003) MiniComp (PM2011) Spark III (SK2011)	C-Series, Ultra Narrow Model (C200-2) C-Series, Narrow Model (C300-2) Four-In-One (FO2008-II) TriViz (TT1001)

WINCHESTER

MODEL	MAGNETIC SIGHTS	BEAD REPLACEMENT	REAR SIGHTS OR SIGHT SETS
SX3, SX4, SXP Field	BirdBuster® (BB2005) M-Series, Ultra Narrow Model (M200) Magni-Hunter (MGH2007-I) S-Series, Ultra Narrow Model (S200) Two-In-One, Ultra Narrow Model (TO200)	Flame (FL2005) Magni-Comp (MGC2006) CompSight (PM1002; PMLW01) TriComp (PM2003) MiniComp (PM2011) Spark III (SK2011)	C-Series, Ultra Narrow Model (C200-2) Four-In-One (FO2008-I) TriViz (TT1001)
SX2 1200 1300 1400	M-Series, Wide Model (M400) S-Series, Wide Model (S400) Two-In-One, Wide Model (TO350)	Flame (FL2005) Magni-Comp (MGC2006) CompSight (PM1002; PMLW01) TriComp (PM2003) MiniComp (PM2011) Spark III (SK2011)	C-Series, Wide Model (C400-1) Four-In-One (FO2008-II) TriViz (TT1001)

Use this handy chart to help find the sight that fits your brand of shotgun.

For models and brands not listed, please call us for assistance in selecting the correct sight: 800.589.4315.

The Choice Among the Best in the World

Members of the HIVIZ® Pro Staff have won many major national and international championships in their respective disciplines. The HIVIZ Pro Staff continues to rack up accomplishments every year. Many of the world's top competitive shooters, instructors and hunters rely on HIVIZ sights as they dominate various shooting disciplines. Each year HIVIZ works to deliver effective and innovative sights to give our Pro Staff, as well as our customers, the tools to win!

Handgun

Max Michel

Hunting

Allen Treadwell

Law Enforcement and Military

Mark Hotaling

Trap

Harlan Campbell

Multi-Gun

Lanny Barnes (Multi-Gun & 3-Gun)

Tony Holmes (Multi-Gun)

Jerry Miculek (Multi-Gun & 3-Gun)

Kay Miculek (Multi-Gun & 3-Gun)

Lena Miculek (Multi-Gun & 3-Gun)

Tes Salb (Tactical Games & 3-Gun)

Team Yackley (Multi-Gun & 3-Gun):

Andrew Yackley

Becky Yackley

Mark Yackley

Sean Yackley

Tim Yackley



HIVIZ® Shooting Systems has always had a vision to improve the sport of shooting. Our goals are simple: break more targets, harvest more game, punch more holes in the 10-ring and have fun doing it! Whether it's in the field, at the range, or for personal defense, HIVIZ has a sight to offer for a broad selection of shotguns, handguns and rifles. Innovative, bright and durable; you can depend on HIVIZ when it matters most. Shoot better. Shoot with confidence. Shoot HIVIZ Shooting Systems.



HIVIZ®

SHOOTING SYSTEMS



CELEBRATING
25
ILLUMINATING YEARS

620 S. Adams Street • Laramie, WY 82070
Toll Free: 800.589.4315 • Fax: 970.416.1208
www.hivizsights.com

HIVIZ®, LiteWave®, LiteWave H3®, TriViz®, XCoil®, CompSight®, Tom Buster®, BirdBuster®, Flame® and Magni-Optics® are registered trademarks. Other manufacturer brands and models are trademarks or registered trademarks of their respective owners, and are used only as reference for fitment and compatibility. HIVIZ® Catalog Copyright 2021. Printed in the U.S.A.